



# GOLDWELL.

PRODUCT BOOK



# BRAND STATEMENT

WE EMBRACE YOUR PASSION FOR BEAUTIFUL HAIR.  
WE BELIEVE THAT ONLY TOGETHER WE CAN REACH NEW HEIGHTS  
BY ACHIEVING CREATIVE EXCELLENCE, OUTSTANDING CLIENT  
SATISFACTION AND SALON SUCCESS.

WE DO MORE THAN JUST UNDERSTAND YOU.  
WE THINK LIKE YOU.

我們全心支持你對秀髮的熱誠。  
我們相信，只有與你緊密合作，  
我們才能共同創造卓越、成就不凡的客戶滿意度，  
以及擁有成功的髮廊，達到前所未有的境界。

我們不但了解你，  
還會凡事都以你的角度考量。

WE THINK STYLIST





# WE BELIEVE IN TRUE PARTNERSHIP

## 我們相信真正的夥伴關係

You need a partner you can trust. We are your professional, full-service salon partner. We love to work hand in hand with you. For us partnership is all about creating value for your salon, your team and your salon clients. We want you to grow and we are here to support you with every step.

你需要一位你信任的夥伴。我們是你專業、提供全面髮廊服務的夥伴。我們喜歡與你攜手合作。對我們而言，夥伴關係能助你提升髮廊、你的團隊和客人的價值。我們希望協助你的事業增長，所以在你踏出的每一步，我們都會提供支援。

Growing these days means acting consciously to find harmony between beauty and sustainability. The Kao Salon Division together with Goldwell aims to reduce the environmental impact of our products and services. Dedicated Goldwell products create an impact without compromising your amazing hair results. Let's go on this journey together.

現今，帶動事業增長是主覺地尋找美麗與可持續性之間的平衡，花王專業髮廊業務與Goldwell的目標是希望減少產品和服務對環境帶來的影響，並藉着Goldwell的產品為保護環境作出貢獻，而又不影響產品的美髮效果。一起為此努力吧！



Reduce Waste  
減少廢物



Conserve Water  
節約用水



Recycling  
再造回收



CO<sub>2</sub> Emission  
減少二氧化碳排放



Material Improvement  
& Reduction  
包裝材料優化減廢

Kao Salon teamed up with ClimatePartner.com. Scan the QR Code to get more information on CO<sub>2</sub> savings and associated climate protection projects.

花王專業髮廊業務已與ClimatePartner.com合作。掃描二維碼以獲取更多關於減少二氧化碳和與保護氣候相關的項目資訊。



**Climate neutral**  
Folding box  
ClimatePartner.com/14717-2005-1001





# CONTENTS

## COLOR LINES 染髮系列

- 10 TOPCHIC
- 14 COLORANCE
- 18 NECTAYA
- 20 NEWANCE BY TOPCHIC
- 24 ELUMEN
- 30 LIGHTDIMENSIONS
- 33 OXYCUR PLATIN
- 34 SYSTEM

## CARE & STYLING LINES 洗護造型系列

- 44 KERASILK
- 58 DUALSENSES
- 72 STYLESIGN
- 79 ELIXIR

## TEXTURE LINES 塑形系列

- 84 NUWAVE
- 86 STRUCTURE + SHINE
- 88 EVOLUTION
- 89 TOPFORM
- 90 VITENSITY
- 91 SYSTEM







“WITH EVERY  
HAIR COLOR  
I CREATE  
AN IDENTITY.”

「我為每一個髮色  
創造出一個身份。」

---

*Rodica Hristu*

INTERNATIONAL GOLDWELL ARTIST,  
CANADA

---





10 TOPCHIC | 14 COLORANCE | 18 NECTAYA | 20 NEWANCE BY TOPCHIC  
24 ELUMEN | 30 LIGHTDIMENSIONS | 33 OXYCUR PLATIN | 34 SYSTEM

# COLOR LINES

Get inspired by a holistic color system that gives you boundless possibilities. From high-performance permanent color to gentle tonings you get everything you need for beautiful and easy to create color results. Just the way your clients love it.

從全面的色彩系統中獲得靈感，引發你的無限髮色可能。  
不論是高效能的永久性染劑或溫和的調色產品，  
皆可讓你輕鬆、漂亮地創造不同髮色效果—你的客人定會喜愛。

## THE DEPOT-CAN SYSTEM 氣壓式罐裝儲存系統

### CLEAN DISPENSING AND EXACT DOSING 衛生及精確地提取染劑

Goldwell is the only brand that offers a Depot-Can System which allows for clean dispensing and exact dosing. After dispensing, the can-system reseals the color and prevents oxidation. It's simple, accurate and economical.

Goldwell是唯一一個採用氣壓式罐裝儲存系統的品牌，  
系統令提取染劑的過程既衛生又精確。擠出染劑後，  
系統會重新密封儲存罐以防止氧化。  
整個過程不但簡單精確，而且符合經濟效益。

### BENEFITS 優點

Eliminate oxidative waste. The airtight can avoid potential oxidation of the color mass and provide prolonged longevity - salons will no longer be throwing away partially used tubes and bottles of color. Convenient mixing and application. Fast and precise measuring. Professional application storage - mix color in front of your clients and let the system increase your salon's image.

將儲存罐密封能預防染劑氧化，從而延長染劑的使用期限，減少因氧化造成的浪費，  
髮廊無需再把開封後氧化了的染劑丟棄。利用這專業的方法儲存染劑，  
能更快捷和精確地提取染劑，令調配和使用染劑變得更方便。  
你可以在客人面前調配染劑，從而提升髮廊的形象。





# TOPCHIC

## INTELLIGENT COLOR FOR DISTINCTIVE BEAUTY 極致完美的髮色成就非凡的美

Topchic guarantees intense colors full of brilliance in all dimensions.  
Perfectly tailored to individual needs.

全方位打造鮮艷奪目、濃郁飽和的髮色，完美量身打造個人化髮色需求。



100 %  
GREY COVERAGE  
遮蓋白髮

ULTIMATE DURABILITY  
極致的髮色持久度

EXCELLENT EVENNESS  
無可比擬的均勻度

OPTIMUM GENTLENESS  
極致溫和配方

UNIQUE APPLICATION  
獨家染劑系統



### PROVEN PERFORMANCE YOU CAN RELY ON 卓越色彩表現

Every Topchic product incorporates specialized technologies - providing tailor-made solutions for your individual needs. They are based on the iconic and intelligent color system that is used for the entire Topchic range: the Integrated Protect System (IPS).

以時尚尖端的配方組成的智能色彩系統 - INTEGRATED PROTECT SYSTEM (IPS) 和護染系統。此外，每個TOPCHIC產品均有專屬科技，量身打造適合不同髮色需求。

### TECHNOLOGY 科技

#### 1. Equalizer System 2.0 色彩平衡系統 2.0

The system combines the patented Equalizer Polymer with cuticle smoothening agents for excellent evenness from roots to tips.

結合了專利的均衡聚合物與角質層平滑劑，智能調整平衡結構性差異，讓髮根到髮尾達至出色的均勻度。

#### 2. Coenzyme Technology 抗自由基酵素科技

The patented Coenzyme Technology intelligently prevents hair from damage by neutralizing free radicals. For extraordinary brilliant color tonality, gentleness and durability.

擁有註冊專利的抗自由基酵素科技，智能地中和自由基以阻止氧化頭髮造成傷害，達致鮮艷髮色、柔和髮質及持久效果。



# TOPCHIC

## PERMANENT HAIR COLOR 永久性染髮系列

Perfectly performing color with 100% grey coverage.  
完美髮色表現，100%遮蓋白髮。

### THE NATURALS

100% grey coverage with complete variety.  
全方位天然基色100%遮蓋白髮

100% natural coverage of fine to normal hair (N-shades).  
N天然基色調：細軟至一般髮質100%遮蓋白髮

100% grey coverage with a cool color direction (NA-shades).  
NA天然冷基色調：冷色調100%遮蓋白髮

100% grey coverage on resistant hair or more intense grey coverage on normal hair (NN-shades).  
NN加強基色調：抗拒性髮質、粗硬髮質或一般髮質100%強效遮蓋白髮

@Eluminated Naturals with multi-shine reflections and up to 100% grey coverage in all dimensions, ready-to-use formula.  
永久炫彩天然基色能將光線多重反射，並能達至100%全方位遮蓋白髮，配方可即時使用



### THE BLONDES

Luxurious warm and clear cool blondes.  
格調暖金與純淨冷金



### THE BROWNS

Rich warm browns and elegant cool browns.  
濃郁暖棕與優雅冷棕



### THE SPECIAL BROWNS

Asian formula-100% grey coverage.  
亞洲專屬100%白髮遮蓋色系



### THE REDS

Vibrant warm reds and cool energy reds.  
魅惑暖紅與活力冷紅



# TOPCHIC

## PERMANENT HAIR COLOR 永久性染髮系列

Perfectly performing color with 100% grey coverage.  
完美髮色表現，100%遮蓋白髮。

### TOPCHIC @ELUMINATED SHADES 永久炫彩系列

@Eluminated Technology expanded to a whole color spectrum of reds, blondes, browns and cool shades.  
以炫彩科技(@Eluminated Technology)創造出紅色、棕色、金色色譜和冷色

Oxidative hair color spiced up with a layer of outstanding multi-shine Elumen reflections.  
氧化性染劑呈現Elumen色素粒子的光澤



### THE SPECIAL LIFT 2+1高度染淺色

Topchic HiBlondes Control offers a broad shade spectrum:  
The 11-Series lifts hair up to 4 levels lighter.  
The 12-Series offers up to 5 levels of lift.

永久高染淺色系去淺髮色達5度，設有多種色調

Topchic Effects create warm and cool, unique fashion contrasts while lifting up to 4 levels - even on colored hair.  
永久特效紅色系創造出冷暖、獨特時尚的對比，去淺髮色(包括染後頭髮)達4度



### SMOKY COOL PASTELS

Asian Formula – delivers customized cool, smoky color expression in just one step, featuring eight cool pastel shades.  
亞洲專屬煙燻色系 — 只需一步即可塑造冷調髮色，並透出霧感色彩，具有8種炫酷柔和色調。



### THE MIX SHADES

Intensifying and neutralizing mixers.  
強化或矯色



### TOPCHIC LOTION 霜狀雙氧乳

Great consistency for ideal spreadability and perfect adherence of the color to the hair. 3%, 6%, 9% and 12%.  
配方質感柔滑，易於塗放並完美附在髮絲上。設有3%，6%，9%，12%

With IntraLipid for ideal combability and smoothness.  
採用IntraLipid技術，使染後髮絲順滑不糾結

Bottle shape for ideal handling, optimal squeezing and perfect compatibility with the Depot-Can System.  
曲線瓶身容易操作和擠壓，與氣壓式罐裝儲存系統完美結合





# COLORANCE

THE DEMI-PERMANENT HAIR COLOR  
WITH INTRALIPID THAT REPAIRS  
THE HAIR STRUCTURE  
以專利脂質配方INTRALIPID科技於染髮同時  
修補髮質結構的半永久染髮產品

The healthier the hair, the more beautiful and shiny the color result will be.

Achieve fresh, lively and intensive colors.

健康的髮質色彩更亮麗光澤。髮色更鮮明、亮麗、豐潤。



BRILLIANT SHINE  
亮麗耀眼

SMOOTH HAIR FEEL  
順滑無比

OUTSTANDING  
GENTLENESS  
極致溫和

WITHOUT AMMONIA  
不含阿摩尼亞

WITHOUT  
AMMONIA ODOR  
不帶阿摩尼亞氣味

THE REPAIR INNOVATION  
FOR A GREAT COLOR FEELING  
針對髮色的革命性修護

pH-balanced  
technology



TECHNOLOGY  
科技

**Perfectly colors and repairs in one step**  
染髮和修護完美地同步進行

The pH-balanced formula with integrated IntraLipid effectively repairs the hair structure by regenerating up to 70% lost lipids.

酸鹼平衡的配方結合IntraLipid技術，能有效地修復髮質結構，填補髮髓內已流失的脂質達70%。



# COLORANCE

## DEMI-PERMANENT HAIR COLOR

### 半永久性染髮系列

For unlimited possibilities: Enhancement of natural color, expressive fashion shades or refreshment of colored bases. Grey coverage of up to 50%.

創造無限可能：提升天然髮色、展現時尚色調或為染後髮色回復亮麗生氣。  
遮蓋白髮多達50%。

#### COLORANCE



Beautiful, glossy hair full of freshness and liveliness.  
富有光澤的秀髮，髮色鮮明耀目、亮麗動人

New expression for the existing natural tone.  
增添飽滿天然髮色

Refreshment of color-treated bases.  
讓重染髮色回復亮麗生氣

#### COLORANCE MAXREDS SHADES



Brilliant reds ranging from warm to cool.  
從冷紅到暖紅的絢麗色彩

Intensive, vibrant and brilliant reds - even on darker bases.  
在深色的髮質上依然綻放生動艷麗的紅色



#### COLORANCE @ELUMENATED SHADES 半永久炫彩系列



@Elumened Technology expanded to a whole color spectrum of reds, blondes and browns.  
以炫彩科技(@Elumened Technology)創造層出不窮的紅色、棕色和金色髮色效果

Oxidative hair color spiced up with a layer of outstanding multi-shine Elumen reflections.  
氧化性染劑呈現Elumen色素粒子的光澤



#### COLORANCE PASTEL SHADES



Beautiful, fashionable pastel color effects. Perfectly suited for pre-lightened hair. Available in Pastel Rose, Pastel Lavender, Pastel Peach, Pastel Mint, Pastel Indigo.  
創造美麗、時尚的粉色效果，特別適合染淺髮色使用。色調包括：粉紅玫瑰色、薰衣草色、粉桃色、薄荷綠、粉藍色

#### COLORANCE MIX SHADES



To create individual color results.  
創造獨特的髮色效果

Ideal for creative fashion results and color correction.  
適用於時尚創意髮色效果及髮色調整

#### COLORANCE LOTION 半永久雙氧乳



Especially designed to work with Colorance - perfectly suited for usage with applicator bottle.  
Colorance半永久染劑專用 — 能完美地配合塗搽樽使用

# COLORANCE

## DEMI-PERMANENT HAIR COLOR

### 半永久性染髮系列

With added grey covering power of up to 75% (NN).

加強遮蓋白髮效果，遮蓋率達75% (NN加強基色調)。

#### COLORANCE NN SHADES



Simply make grey disappear - gentle and reliable.  
溫和、可靠地遮蓋白髮

Natural shades for discreet grey coverage of up to 75%.  
天然色調可蓋白髮達75%

#### COLORANCE COVER PLUS LOTION 半永久加強遮蓋雙氧乳



Especially designed to work with Colorance Cover Plus - perfectly suited for usage with bowl and brush.  
Colorance半永久加強遮蓋染劑專用 — 能完美地配合塗搽碗掃使用



# NECTAYA

## HAIR COLOR WITHOUT AMMONIA, WITHOUT AMMONIA ODOR

不含阿摩尼亞，不帶氣味的染髮產品

Nectaya enriches with nurturing care creating the best basis for beautiful color results without compromising on performance.

Nectaya永久性染髮系列極致保護髮絲，染後秀髮依然健康柔順，染髮效果亦完全不受影響，呈現光彩亮麗的髮色。



NURTURING HAIR COLOR -  
WITHOUT AMMONIA,  
WITHOUT AMMONIA ODOR  
滋養修護髮絲，不含阿摩尼亞，  
亦不帶阿摩尼亞氣味

NOTABLY HEALTHIER HAIR FEELING  
染後髮質感覺健康柔順

RICH SATURATED COLOR  
濃郁飽和的髮色效果

OPTIMUM GENTLENESS  
溫和適中

GUARANTEED  
GREY COVERAGE - UP TO  
有效遮蓋白髮達

100 %

A UNIQUE COMBINATION  
OF TECHNOLOGIES  
融合多種嶄新先進的滋養髮絲技術



6 years of extensive research.  
經過6年精心研發。

The first ever permanent hair color with patented IntraLipid Technology to replenish lost lipids within the hair structure.  
首個揉合專利IntraLipid技術的永久性染髮產品，填補髮髓內已流失的脂質，讓秀髮持續健康。

TECHNOLOGY  
科技

Up to 91% ingredients of natural origin.<sup>2</sup>  
配方含高達91%天然成分<sup>2</sup>。

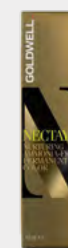
Enriched with deep conditioning Argan Oil.  
以具深層滋養修護髮絲功效的摩洛哥堅果油製成。

Cosmetic cream consistency with 100% natural fragrance.  
100%天然香氣，絲一般柔滑質感媲美乳霜。

# NECTAYA

## PERMANENT HAIR COLOR 永久性染髮系列

Hair color containing nurturing IntraLipid without ammonia, without ammonia odor.  
揉合具滋養功效的專利脂質配方IntraLipid技術，不含阿摩尼亞，不帶氣味的染髮產品。



### NECTAYA NURTURING COLOR CREAM NECTAYA染髮蜜乳

Super nurturing hair color for a notably healthier hair feeling.  
滋養修護髮絲的染髮產品，使染後髮絲感覺健康柔順

Concise range with 36 intermixable shades to meet all color needs.  
包括36種可相互混合色調系列，能全面滿足不同客人對髮色的需求

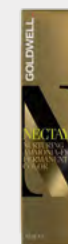
For refined, rich and deep color results with exceptional color brilliance.  
呈現細緻濃郁、光彩亮麗的髮色，效果卓越出眾



### NECTAYA NURTURING DEVELOPER LOTION NECTAYA護髮雙氧乳

Rich formula available in 3%, 6% and 9% to meet all color needs.  
精心研發的豐潤配方，擁有多種不同濃度(3%、6%和9%)，滿足不同客人對髮色的需求

The creamy consistency is easy to apply and pleasant to work with.  
如絲一般的柔滑質感讓髮型師於塗放時更得心應手和節省時間



### NECTAYA ENRICHED NATURALS

Natural smoothness, manageability and shine for an incredibly rejuvenated hair feel.  
使染後髮絲自然順滑，飽滿有光澤

Super nurturing care and gentleness.<sup>1</sup>  
溫和、滋養、修護髮絲的染髮產品<sup>1</sup>

Up to 100% grey coverage and natural, lively color results.  
有效遮蓋白髮高達100%



<sup>1</sup>When compared to conventional, ammonia-free permanent hair color - confirmed by EMTEC, Laboratory for Electromicroscopy and Material Analysis, 2012.  
經電子顯微鏡學及物料分析實驗室EMTEC於2012年的研究證實，與常見不含阿摩尼亞的永久染髮劑作比較。

<sup>2</sup>Incl. water. 包括水

<sup>1</sup>CAUT 2014, Germany, n=71.



# NEWANCE BY TOPCHIC

NEW SHADES OF BEAUTIFUL.  
DEDICATED TO YOU.

為你獻上全新的美麗色調

On-trend, natural-looking and grey-blending - that's the all-in-one Newance Fashion Browns. Smoky shades that are tailor-made to look natural on Asian beauty, while reliably blending first grey. 緊貼潮流、效果自然、與白髮融合的髮色 — 這正是多用途的Newance Fashion Browns時尚棕色系列。按亞洲人的審美標準，將煙燻色調訂製成效果自然，同時可與白髮自然融合。



LONG LASTING DURABILITY  
WITH ON-TONE FADING  
髮色效果持久，隨時間原調淡化

GREY COVERAGE AND  
NATURAL-LOOKING BLENDING  
可遮蓋白髮或締造自然融合效果

EXCELLENT SMOOTH AND  
SOFT HAIR FEEL  
為頭髮帶來無可比擬的順滑  
和柔軟感覺

EXTRA GENTLENESS AND A  
PLEASANT SMELL  
份外溫和，而且氣味怡人

THE PERFECT BLEND OF JAPANESE INGREDIENTS AND GERMAN TECHNOLOGIES  
日本的成分揉合德國的科技

**Low Ammonia Formula with  
Camellia Seed Oil**  
低阿摩尼亞配方，揉合山茶花籽油  
**Inbuilt Grey Control Mechanism**  
白髮內置操控系統

**INTRALIPID™**  
人工脂質  
**Coenzyme Technology**  
抗自由基酵素科技  
**Equalizer System 2.0**  
色彩平衡系統2.0



# NEWANCE BY TOPCHIC

## PERMANENT HAIR COLOR

### 永久性染髮系列

Japanese formulas and ingredients fused with Goldwell high-performance German technology deliver a tailor-made and exclusive new color range.  
日本成分及配方，結合Goldwell德國高效的科技，帶來獨有的專屬日系染髮系列。



#### **FASHION BROWNS** 時尚棕色系列

Smoky shades that are tailor-made to look natural on Asian beauty, while reliably blending first grey.  
按亞洲人的審美標準，將煙燻色調訂製成效果自然，同時可與白髮自然融合



#### **NEWANCE LOTION** NEWANCE雙氧乳

Great consistency for ideal spreadability and perfect adherence of the color to the hair. 2.5%, 6%, 9% and 12%.  
配方質感柔滑，易於塗放並完美附在髮絲上。設有2.5%、6%、9%

With IntraLipid for ideal combability and smoothness.  
採用IntraLipid技術，使染後髮絲順滑不糾結







# ELUMEN

## COLOR DIFFERENT 色彩大不同

A paintbox to color outside the lines. Full flexibility is yours.  
創意髮色的繪製工具箱，讓你盡享色彩世界的靈活多變。



CHOOSE  
LONG LASTING OR  
SEMI-PERMANENT  
COLOR  
永久或半永久色彩效果

AND PERFECTLY  
MATCHED  
COLOR CARE  
完美匹配的髮色  
護理產品



# ELUMEN

EVERYTHING A COLOR IS. AND ISN'T.  
實踐染劑的「可能」和「不可能」

Long lasting color, oxidant-free. Exceptional brilliance with incredible shine.  
Exceptional durability. Up to 100% natural grey coverage.  
色彩持久，非氧化性，帶有無可比擬的亮麗和超乎想像的光澤和非凡的持久度。



## ELUMEN COLOR ELUMEN染劑

Long lasting hair color oxidant-free. Extra vibrant and shiny hair color without damage. No ammonia odor. Now including Elumen Grey and Blonde Shades. 色彩持久的非氧化性染劑，讓髮色份外鮮明富光澤而不傷頭髮，不帶阿摩尼亞氣味。新增Elumen灰色及亮金色色調



## ELUMEN CLEAR ELUMEN淡化色調劑

Color mass without dyestuffs - to soften or lighten any Elumen shade or to enhance the natural shine when used purely. 不含任何顏料色素 — 稀釋任何Elumen色調的理想選擇，獨立使用能帶出自然光澤



## ELUMEN PREPARE ELUMEN染前髮質護理

Pre-treatment. Improves the durability and optimizes the deposit of Elumen hair color. 於染前作修護用，可提升持久度，讓頭髮處於最佳狀態，使Elumen染劑能均勻地滲透及依附在髮絲上



## ELUMEN THICKENER ELUMEN色彩凝結液

Thickens the consistency of Elumen hair color when carrying out creative techniques. 使用創意技巧染髮時，增加Elumen染劑的稠結度



## ELUMEN LOCK ELUMEN染後鎖色護理

Reduces fading of Elumen hair color for a longer lasting result. 減少洗髮時出現褪色情況，增加持久度



## ELUMEN RETURN ELUMEN髮色還原劑

Hair Color Reducer. Reduces the color immediately after coloration with Elumen. Works without oxidizing and reducing agents. 染髮後用的色彩減淡劑，能立即減低Elumen色彩濃度，不含氧化或還原物質



## ELUMEN CLEAN ELUMEN皮膚去漬液

For the gentle removal of stains on the skin caused by Elumen and Elumen Play hair color. 溫和、徹底地清除殘留在皮膚的Elumen及Elumen Play玩色系列染劑

# ELUMEN PLAY ELUMEN PLAY玩色系列

PRESS PLAY TO START.  
啟動玩色程序

Semi-permanent color. Maximum versatility. Lasts up to 10-15 washes.<sup>1</sup>  
具多重功效的半永久性染劑，髮色效果持續達10-15次洗髮。<sup>1</sup>



## ELUMEN PLAY COLOR ELUMEN PLAY玩色系列染劑

Semi-permanent hair color. Ready to use. No developer required. No Color shift. Fading on tone.<sup>2</sup> Now including Elumen Play Metallics. 可即時使用的半永久性染劑，無需配合雙氧乳，不會導致色彩變化，髮色自然原色淡化<sup>2</sup> 新增Elumen Play亮金屬色調



Folding box 100% climate neutral  
包裝盒：100%氣候中和



## ELUMEN PLAY ERASER ELUMEN PLAY髮色還原粉

Removes any Elumen Play shade by up to 100%<sup>3</sup> on pre-lightened hair. 專為去除Elumen Play染劑而設計，能將染淺後髮絲上的顏色100%<sup>3</sup>去除

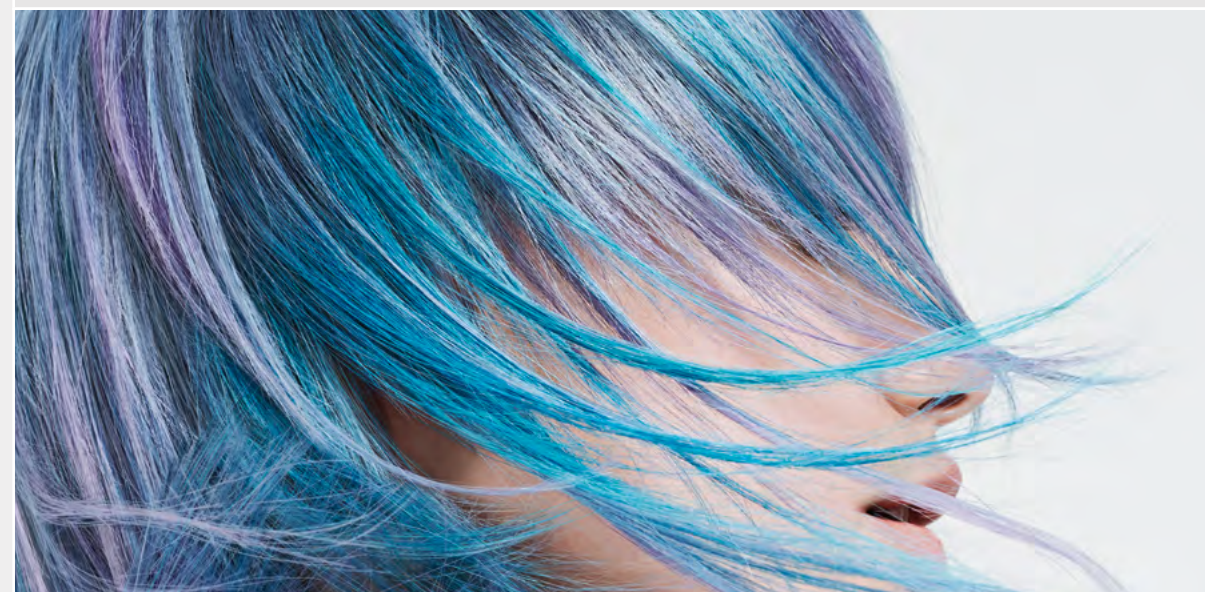
Creates a clean canvas for your creativity. With effective caring agents that help to insure hair's integrity during the process.

把頭髮打造成一幅潔淨的畫布；蘊含高效的修護因子，在放置時能保持頭髮結構完整

Provides a conditioned and smooth hair feel. 提供修護及順滑的觸感



Folding box 100% climate neutral  
包裝盒：100%氣候中和



<sup>1</sup>Depending on shade and hair structure. 視乎頭髮結構和髮色鮮艷度。 <sup>2</sup>Up to 100%. 高達100%。  
<sup>3</sup>Depending on hair structure and intensity of existing color. 視乎髮質結構及現時髮色的濃郁度。



# ELUMEN

COLOR CARE LIKE NO OTHER.

髮色護理的不二之選

The perfect match for Elumen and Elumen Play.

與Elumen及Elumen Play完美匹配。



## ELUMEN SHAMPOO ELUMEN洗髮露

Specially designed for Elumen colored hair: Color care shampoo for all hair types. Gently cleanses, supports the repairing effect and reduces washout of Elumen hair color. Further allows Elumen Play to gradually fade out tone on tone. Maintains the special Elumen brilliance and color intensity.  
專為Elumen髮色而設計：護色洗髮露適合所有髮質，能溫和地潔淨，徹底發揮Elumen的修復作用，延長Elumen Play原色淡化效果；讓Elumen獨有的亮麗和色彩的濃郁度得以維持



## ELUMEN CONDITIONER ELUMEN護髮素

Specially designed for Elumen colored hair. Color care conditioner for fine to normal hair. Detangles instantly for better combability. Reduces frizz and smoothes the surface of the hair. Supports the repairing effect and reduces washout of Elumen hair color. Further allows Elumen Play to gradually fade out tone on tone. Maintains the special Elumen brilliance and color intensity.  
專為Elumen髮色而設計的護色護髮素。適合幼細至一般髮質，能即時順滑髮絲，使頭髮更易梳理，減少毛躁並使頭髮表層回復順滑。徹底發揮Elumen的修復作用，延長Elumen Play原色淡化效果；讓Elumen獨有的亮麗和色彩的濃郁度得以維持



## ELUMEN LEAVE-IN CONDITIONER ELUMEN護髮噴霧

Specially designed for Elumen colored hair: Lightweight leave-in conditioner for fine to normal hair. Nourishes instantly for improved detangling and combability.  
專為Elumen髮色而設計的輕盈修護噴霧。適用於幼細至一般髮質，即時為髮絲提供養分，使髮絲順滑容易梳理



## ELUMEN MASK ELUMEN修護髮膜

Specially designed for Elumen colored hair. Nourishing mask for thick and porous hair. Intense care for Elumen colored hair.  
專為Elumen髮色而設計，可為粗硬及多孔髮質注入養分的髮膜，提供深層修護



COLOR LINES



# LIGHTDIMENSIONS

STRONGER. SMOOTHER. FASTER.  
LIGHTENING UNLIMITED  
更強效、更順滑、更快捷，  
去色無制限

Goldwell's superior lightening range with cutting edge technologies.  
Goldwell優質去色產品揉合先進的科技。



POWERFUL LIFTING PERFORMANCE  
強效的去色功效

INCREDIBLY HAIR FRIENDLY  
對髮絲無比溫和

FULLY CUSTOMIZABLE  
完全可量身調配

## TECHNOLOGY 科技

By controlling free radicals the **Lightening Control Technology** allows a stronger and more targeted lift.

去色操控科技可有效控制自由基，帶來更強效、更針對性的去色效果。

With **Anti-Yellow-System** for the clearest and most even results.  
揉合去黃系統締造最通透和均勻的效果。

The integrated **BondPro+ Technology** protects the hair from damage and strengthens the hair fibres.<sup>1</sup>

結合BP+鍵鎖強化科技，可保護髮絲避免受損，同時可強韌頭髮纖維<sup>1</sup>。

<sup>1</sup>If used in combination with BondPro+ step 2.  
如結合BP+鍵鎖強化系統第二劑使用



# LIGHTDIMENSIONS SILKLIFT

## HIGH PERFORMANCE LIGHTENERS 高效能去色粉

For the best hair condition after a lightening service.<sup>1</sup> Perfect conditioning through integrated IntraLipid Technology and SilkProteinComplex. For ultra shiny, smooth and soft hair.

讓頭髮在去色後保持最佳狀態<sup>1</sup>，透過IntraLipid專利脂質科技和SilkProteinComplex蠶絲蛋白複合物為頭髮提供完美修護，帶來髮絲額外光澤、順滑和柔軟。



### SILKLIFT STRONG SILKLIFT強力去色粉

Most powerful lift for normal to resistant hair.  
Up to 9 levels of lift.  
一般及抗拒性髮質適用：去色至9度

Packaging 80% less plastic<sup>2</sup>, recyclable by 97%<sup>3</sup>.  
Folding box 100% climate neutral.  
包裝使用塑膠 — 80%<sup>2</sup>；可回收度：97%<sup>3</sup>  
包裝紙盒：100%氣候中和



### SILKLIFT CONDITIONING CREAM DEVELOPER SILKLIFT修護去色乳

Conditioning cream developer for SilkLift.  
SilkLift專屬具修護功效的去色乳

Ensures the best possible care and conditioning during the lightening process.<sup>4</sup>  
確保在去色過程中提供最佳護理及修護效果<sup>4</sup>

3% (10 VOL.)  
6% (20 VOL.)  
9% (30 VOL.)



### SILKLIFT 2IN1 SERUM SILKLIFT倍護精華

Ultra high concentrated conditioning and tone stabilizing serum; adds intensive care & condition to the hair.  
濃度極高的修護及色調穩定精華，為頭髮帶來深層護理和修護

<sup>1</sup>When compared to leading competitors. 與業內主要競爭對手比較

<sup>2</sup>Than former SilkLift box. 與舊版SilkLift盒裝比較

<sup>3</sup>Assessed by cyclos HTP GmbH for D, AT, NL, UK, NO (varies for different packaging components).  
由德國cyclos HTP研究所驗證（不同包裝的物料各有差異）。

<sup>4</sup>Due to formula with SilkProteinComplex and IntraLipid Technology.  
由於配方採用了蠶絲蛋白複合物和IntraLipid專利脂質科技

# LIGHTDIMENSIONS OXYCUR PLATIN

## POWERFUL POWDER BLEACH - FAST AND PRECISE 高效能漂粉 — 漂淺效果快速又準確

Meets all bleaching service demands ranging from subtle highlights to extreme lift.

For powerful and gentle results. Pleasant and easy to work with -  
mixes easily into a creamy consistency.

滿足所有漂染服務的需求，不論是低調挑染或是極致漂淺，效果溫和、卓越。  
容易混合成乳霜質感，操作容易方便。



### OXYCUR PLATIN OXYCUR PLATIN漂粉

Multi-purposelighting powder; Up to 9+ levels of lift.  
多用途去色粉，去色至9度色階或以上

The strongest lifting power at full speed<sup>1</sup> for all service techniques.  
能於最短時間內發揮最強的去色效果<sup>1</sup>

<sup>1</sup>Within the LightDimensions range. 適用於LightDimensions透亮去色系列



# SYSTEM @PURE PIGMENTS

## IMAGINE COLOR. NOW MULTIPLY IT 髮絲上實現想像色彩

A revolution in Goldwell hair color.  
High-definition direct dye additives that elevate hair color  
with unprecedented vibrancy and brilliance.

為Goldwell染髮系列帶來革新突破 —  
高晰度直接色素添加劑令髮色提升至前所未見的透亮光澤。



### ELUMENATED COLOR ADDITIVE 為髮色添上幻光效果

The eight concentrated tones of  
@Pure Pigments add a unique play of color  
reflections and shine to your Goldwell  
color. Developed to work exclusively  
with Topchic, Colorance, Nectaya,  
@Pure Pigments integrates easily into  
your favorite formulations.

@Pure Pigments幻光純色系列備有八種  
精華色調，為Goldwell色系增添獨有閃亮  
光彩。為配合Topchic、Colorance、Nectaya  
染髮系列而設，@Pure Pigments幻光純色  
系列能簡易調配出你喜愛的染髮配方。

### BREAKTHROUGH TECHNOLOGY 突破性技術

HD<sup>3</sup> Color Technology in  
@Pure Pigments is the next generation of  
direct dye technology from Goldwell. This  
breakthrough innovation creates long-  
lasting, multi-dimensional, high-definition  
color results for unique light reflections and  
extraordinary shine from all angles.

@Pure Pigments幻光純色系列的HD<sup>3</sup>立體  
染髮科技是Goldwell研發的新一代直接染髮  
技術。突破性新技術帶來持久、多面而細緻  
鮮明的髮色效果，每個角度均呈現了髮絲  
獨特光亮效果，令髮色幻光炫彩起來。

MULTI-DIMENSIONAL  
SHINE  
多角度呈現閃耀光芒

EXTRAORDINARY  
COLOR BRILLIANCE  
非凡的光彩髮色

UNPRECEDENTED  
VIBRANCY  
前所未見的鮮明亮澤

OUTSTANDING  
COLOR INTENSITY  
超卓的髮色飽和度

LONG-LASTING  
效果持久

# SYSTEM

CREATIVITY  
發揮創意

Unlimited customization of your color services with @Pure Pigments innovative additives.  
利用@Pure Pigments為你的染髮服務創造出無限的個人化色彩。



### PURE YELLOW, PURE ORANGE, PURE RED AND PURE VIOLET 純黃色、純橙色、純紅色及純紫色

Create vivid tones and effects.  
創造鮮明色調效果



### COOL VIOLET, COOL PINK 冷紫色及冷粉紅

Create vivid tones and counteract unwanted tones.  
創造鮮明色調效果及中和不必要的色調



### PEARL BLUE AND MATTE GREEN 珍珠藍及啞光綠

Soften and counteract unwanted tones.  
調低及中和不必要的色調



### THICKENER 色彩凝結液

Forget bleeding - place even strongly contrasting tones next to  
each other, with up to 4 levels difference.<sup>1</sup>  
防止染劑互相混和 — 可將色彩對比強烈的染劑並列使用  
(可高達4度色階色差)<sup>1</sup>

No limitations and no foils.  
沒有規限，毋須錫紙

Maintains the perfect performance of your color and lighteners.  
使用後，染劑和去色粉仍能發揮最佳功效

<sup>1</sup>30 drops Thickener for 80ml Topchic color mass or 40 drops Thickener for 80ml Topchic @Eluminated color mass.  
將30滴色彩凝結液加入80 ml Topchic染劑或將40滴色彩凝結液加入80 ml Topchic @Eluminated永久炫彩系列染劑



# SYSTEM BONDPRO+

## A NEW LEVEL OF COLOR EXPERTISE

### 染髮專業技術的新層次

BondPro+ ensures exceptional hair quality after lightening, coloring and texturing services.

BP+鏈鎖強化系統讓髮絲於漂染或電燙後保持強韌健康。



SUPERIOR RELIABILITY  
優質可靠

NO VISIBLE DILUTION  
不會影響髮色

EASY 2-STEP  
APPLICATION  
只需兩個步驟，簡單易用

NO ADDITIONAL  
PROCESSING TIME  
無需額外操作時間

100 %  
CUSTOMIZED TO  
GOLDWELL  
配合GOLDWELL產品

#### HOW BONDPRO+ WORKS BP+鏈鎖強化系統如何運作

BondPro+ protects hair from damage during alkaline services and therefore prevents breakage by strengthening the hair fiber and supporting bond stability.

BP+鏈鎖強化系統保護頭髮避免於鹼性服務過程中折斷，強化頭髮纖維、穩固頭髮鏈鎖。

Due to its deeply nourishing and revitalizing effect, it will make hair look and feel significantly healthier. There is no visible dilution of lightening or color performance. 它能深層滋養，激活髮絲，令髮質明顯地變得更健康、更富彈性。不會影響染淺或染後髮色。

#### TECHNOLOGY 科技

The BondPro+ Inter-Amino-Bonding-System is based on an advanced amino acid formula in combination with moisturizing panthenol and cationic polymers. BondPro+ is 100% customized to Goldwell products. Its application is quick and easy, with no habit change or different developer necessary.

BP+髮髓氨基酸鏈鎖保護系統是一種結合能補充水分作用的維他命B5及含有陽離子聚合物的氨基酸配方。BP+鏈鎖強化系統100%配合GOLDWELL產品，簡便易用，無需改變任何程序或使用其他去色乳。



# SYSTEM

## BALANCE 平衡結構

BondPro+ high performing products to optimize the hair structure and prevent hair damage.  
BP+鏈鎖強化系統是一套高效能的產品，可使頭髮結構達至最佳狀態及預防頭髮受損。



### 1. PROTECTION SERUM 鏈鎖強化精華

Penetrates the hair fiber and protects it from within during alkaline bleaching, coloring and texturizing processes. It therefore strengthens hair and prevents breakage.  
滲透髮絲，避免頭髮纖維在漂淺、染髮及燙髮過程中受到損害，減少頭髮折斷



### 2. NOURISHING FORTIFIER 鏈鎖修護鞏固劑

A rich, intensive treatment that reinforces the bonds within the hair. Each hair fiber is strengthened and deeply nourished.  
深層滋養髮絲，鞏固髮芯鏈鎖，頭髮纖維更強韌



### BONDPRO+ PROFESSIONAL KIT BP+鏈鎖強化系統專業套裝

1x Protection Serum and 2x Nourishing Fortifier.  
包括：一支鏈鎖強化精華及兩支鏈鎖修護鞏固劑



### STRUCTURE EQUALIZER 染前調整噴霧

Instantly equalizes structural differences. Optimizes the color deposit on hair. For more even color results.  
即時平衡輕微受損髮質結構，讓上色效果均勻完美

# SYSTEM

## SOLUTION 實踐方案

The Goldwell System products offer you every tool to perfect your color services.  
Goldwell輔助系統為你提供一切完滿髮色服務的工具。



### SYSTEM COLOR REMOVER SKIN 去色潔膚液

For the effective, yet gentle removal of skin staining. Ready-to-use, mild lotion. Dermatologically tested.  
溫和而高效地清除殘留在皮膚上的染劑，方便及容易使用；即時使用配方，通過皮膚測試證實溫和



### HAIR COLOR REMOVER 髮色還原粉

High-performance formula enriched with conditioning PQ10. It penetrates the hair and gently<sup>1</sup> removes the oxidative dyestuff molecules. Its unique CanvasReset System with integrated BondPro+ protects the hair's integrity while effectively removing the artificial color.  
高效能的配方蘊含具修護功效的PQ10，能滲透髮絲溫和地去除氧化性染劑分子，其獨特的髮色還原系統(CanvasReset System)結合BondPro+鏈鎖強化科技，可保護頭髮結構完整健康，同時有效清除人工色素



<sup>1</sup>In comparison to a conventional bleach wash.  
與傳統的漂髮方法比較。





“THE STRENGTH OF  
MY CLIENTS’  
HAIR BEGINS WITH  
PERFECT CARE.”

「讓客人的秀髮保持  
健康強韌，應從完美的  
護理著手。」

---

*Rebecca Hiele*

GOLDWELL  
INTERNATIONAL ARTIST,  
USA

---



# CARE & STYLING LINES

Each salon client is unique. With the Goldwell care & styling portfolio you can serve all of your clients' individual hair needs and have the perfect answer to their lifestyle and daily hair care routine.

The assortment makes your daily salon life easier and supports your business by offering complementary home care products.

髮廊的每一位客人都是獨特的，以Goldwell的洗護造型產品照顧你每一位客人的個別頭髮需要，為他們的日常生活和護髮程序帶來完美的方案。Goldwell洗護造型產品配合你的髮廊服務，不但能簡化你的日常工作，更名為髮廊帶來收入。

## DUALSENSES & STYLESIGN - THE PERFECT MATCH 天作之合

Don't work hard, work quick, easy and smart! Dualsenses and StyleSign are the essential care & styling brands you can count on. Developed exclusively for you, they work hand-in-hand for guaranteed results of a true professional.

護理頭髮不單靠勤力，選用快捷、簡易及明智的護理配方才是關鍵！

Dualsenses及StyleSign是讓你可以放心信賴的洗護品牌，特別為你而研發，它們能互相配合，帶來最好的髮廊及家居護理效果。

Dualsenses delivers instantly visible and touchable results with built-in color protection in all products<sup>1</sup> and an innovative color technology for magnificent luminosity.

Dualsenses系列帶來即時看見與觸摸得到的效果，現在整個系列的產品<sup>1</sup>均具鎖色功效，以及革命性的亮色科技，帶來明艷亮麗的髮色。

StyleSign supports you in creating true signature styles for all of your clients. The easy-to-use and reliable products simplify your styling routine, whilst help protecting your client's hair from heat, premature fading – containing UV filter.

StyleSign是你為客人創造出色的造型的強大後盾，產品簡單易用而且可靠，可簡化你的造型程序，同時為客人提供抗熱保護和預防頭髮過早褪色—兼具紫外光濾網。

## KERASILK LUXURY HAIR CARE KERASILK絲蛋白尊貴護理系列

For long-lasting transformation into perfect hair like silk, Kerasilk's luxurious assortment will care for your highly demanding clientele. It offers exclusive technologies combined with high-end ingredients. Luxurious in-salon services provide long-lasting results for all your clients' hair needs while the exclusive home care products extend the Kerasilk experience.

The styling products give you all you need to create the finest looks. Holistic hair care from scalp to the perfect finish.

長效修護髮絲，使秀髮如絲般完美，為要求高的客人帶來優質的護理效果。這個系列揉合了獨有的專屬科技和珍貴活性成分，讓客人在髮廊享受切合頭髮所需的尊貴護理後，得到長效的非凡修護功效；家居護理系列則讓他們延續Kerasilk的髮廊護理效果；造型系列為你提供創造精細造型的一切所需。從頭皮護理以至完美造型，Kerasilk全面呵護秀髮。







# KERASILK

LONG-LASTING TRANSFORMATION  
INTO PERFECT HAIR LIKE SILK  
長效修護髮質，締造如絲般的完美秀髮



- EXCLUSIVE TECHNOLOGIES  
獨有專屬科技
- HIGH-END INGREDIENTS  
珍貴活性成分
- CUSTOMIZABLE SALON SERVICES  
個人化的髮廊服務
- SALON EXCLUSIVE HOME CARE PRODUCTS  
髮廊獨有的家居護理產品

CARE & STYLING LINES

## KERASILK SEGMENTS 各款KERASILK系列

### KERASILK REVITALIZE 絲蛋白賦活頭皮系列

Rejuvenates scalp and hair by counteracting and protecting against the key signs of scalp aging. 更生頭皮及髮絲，淡化及延緩頭皮衰老現象。

### KERASILK REPOWER 絲蛋白育髮系列

Strengthens and bodifies fine and limp hair. 強韌幼細和扁塌髮絲。

### KERASILK CONTROL 絲蛋白重塑系列

Reshapes and smoothens unmanageable and frizzy hair. 重塑和撫平難以打理的毛躁髮絲。

### KERASILK RECONSTRUCT 絲蛋白水韌系列

Nourishes and reconstructs stressed and damaged hair. 滋養和重建受損髮質。

### KERASILK COLOR 絲蛋白亮色系列

Keeps beautifully colored hair brilliantly shiny. 讓染後秀髮保持髮色鮮明亮澤。

### KERASILK STYLE 絲蛋白造型系列

Enables weightless, touchable styling for beautifully cared-for hair. 為備受呵護的秀髮締造輕盈及可重塑的完美造型。



# KERASILK

## REVITALIZE 絲蛋白賦活頭皮系列

Beautiful hair starts with a healthy scalp. Long-lasting scalp rejuvenation for beautiful scalp & hair.  
健康美麗秀髮從健康頭皮開始，長效更生頭部皮膚，建立健康美麗頭皮及髮絲。

IN-SALON & HOME CARE  
髮廊使用及家居護理

IN-SALON  
髮廊使用

### EXFOLIATING PRE-WASH 賦活頭皮去角質凝膠



- With Jojoba derived exfoliants  
萃取自可可巴的磨砂粒子
- Deeply cleanses scalp  
深層潔淨頭部皮膚

### NOURISHING SHAMPOO 賦活水潤洗髮露



- Gently cleanses after the  
exfoliating step  
於磨砂後使用，能溫和潔淨

### REBALANCING SCALP FOUNDATION 賦活頭皮平衡泡沫



- With activating micro-foam  
蘊含活性微泡沫
- Moisturizes and rebalances the scalp  
能滋潤及平衡頭部皮膚



# KERASILK

## REVITALIZE 絲蛋白賦活頭皮系列

HOME CARE  
家居護理

IN-SALON & HOME CARE  
髮廊使用及家居護理

FOR DRY, SENSITIVE SCALP 適合乾性及敏感頭皮

### NOURISHING SHAMPOO 賦活水潤洗髮露



- Gently cleanses and  
intensively hydrates  
溫和潔淨及深層補濕
- Helps to retain moisture and  
soothe the scalp  
有助保持頭部皮膚水潤及具  
舒緩功效

### NOURISHING SERUM 賦活水潤精華



- Strengthens the natural  
protective layer of the skin  
強化皮膚的天然保護膜
- Intensively hydrates dry,  
sensitive scalp  
為乾燥及敏感的頭部皮膚注入水分
- For a long-lasting soothing effect\*  
帶來長效的舒緩作用\*

\* by daily usage 需每天使用

FOR UNBALANCED SCALP 適合水油失衡頭皮 / 油性頭皮

### DETOXIFYING SHAMPOO 賦活淨化洗髮露



- Effectively cleanses and fights  
the symptoms of dandruff  
有效潔淨及清除頭皮屑
- Rebalances oily scalp\*  
使油性頭皮回復平衡

\* by regular usage 需持續使用

### DETOXIFYING SERUM 賦活淨化精華



- Strengthens the natural  
protective layer of the skin  
強化皮膚的天然保護膜
- Effectively fights the symptoms of  
dandruff and rebalances oily scalp  
有效清除頭皮屑及使油性頭皮回  
復平衡
- For a long-lasting clarifying effect\*  
帶來長效的淨化作用\*

\*by daily usage 需每天使用

FOR THINNING, WEAK HAIR 適合稀薄、脆弱髮質

### REDENSIFYING SHAMPOO 賦活髮洗髮露



- Gently cleanses  
溫和潔淨
- The perfect care for a  
rejuvenated scalp and thicker,  
denser-looking hair  
更生頭部皮膚及使頭髮感覺更豐  
厚濃密的完美護理產品

### REDENSIFYING SERUM 賦活髮精華



- Efficiently prevents from  
hereditary hair loss  
有效預防遺傳性脫髮
- Strengthens the roots and  
redensifies the hair  
強韌髮根，使頭髮回復濃密
- For long-lasting thicker,  
denser hair\*  
長效使頭髮更豐厚濃密\*

\*by daily usage 需每天使用



# KERASILK

## CONTROL 絲蛋白重塑系列

For unmanageable, unruly and frizzy hair.  
適合難以打理及毛躁髮質。

Long-lasting transformation into perfectly smooth and soft hair for up to 3-5 months.<sup>1</sup>  
塑造極致順滑柔軟頭髮，長效修護可達3至5個月<sup>1</sup>。

With brilliant color protection, Keratin and Liquid Silk.  
高效護色，蘊含角蛋白及絲蛋白。

IN-SALON  
髮廊使用



### CONTROL SHAMPOO 重塑洗髮露

- Gently cleanses and smoothes  
溫和潔淨及順滑髮絲



### CONTROL CONDITIONER 重塑護髮素

- Smoothes and tames  
順滑及撫平髮絲



### INTENSIVE SMOOTHING MASK 極致順滑髮膜

- Smoothes for long-lasting  
manageability, control and shine  
長效順滑髮絲，令頭髮更易於  
打理，保持光澤亮麗



### PURIFYING SHAMPOO 淨化洗髮露

- Intensively cleanses  
深層潔淨
- Prepares hair for the  
Keratin Treatment  
為絲蛋白重塑護理做準備
- For all hair types  
適合所有髮質



### KERATIN SHAPE/SMOOTH 塑形配方 / 柔絲配方

#### Medium/Intense 一般/強效配方

- Thermal-active KeraShape  
Technology transforms hair into  
long-lasting, smooth and soft  
hair like silk – that lasts up to  
3-5 months  
熱激活KeraShape科技讓頭髮  
持久地如絲般柔軟順滑 —  
長效修護效果可達3-5個月
- Customize by combining Shape  
and Smooth components  
結合塑形與順滑配方：以1:1比例  
使用塑形及柔絲配方



### FINISHING CREAM SERUM 重塑密封乳霜精華

- Seals in the effect of the Keratin  
Treatment and minimizes odor  
將角蛋白的修護效果鎖緊，  
中和氣味
- Provides heat protection  
提供抗熱保護

# KERASILK

## CONTROL 絲蛋白重塑系列

HOME CARE  
家居護理



### CONTROL SHAMPOO 重塑洗髮露

### CONTROL CONDITIONER 重塑護髮素

### INTENSIVE SMOOTHING MASK 極致順滑髮膜



### SMOOTHING FLUID 順滑精華露

- Instantly smoothes and tames  
瞬間撫平及順滑頭髮
- Provides heat protection  
提供抗熱保護



### RICH PROTECTIVE OIL 極致護髮油

- Instantly tames and adds  
intense shine  
即時撫平毛躁，使頭髮倍添光澤
- Provides humidity and  
heat protection  
提供抗潮濕及抗熱保護

<sup>1</sup>In combination with the Control Keratin Treatment.  
配合Kerasilk絲蛋白重塑護理



# KERASILK

## RECONSTRUCT 絲蛋白水韌系列

For stressed and damaged hair.  
適合受損髮質。

Long-lasting transformation into perfectly supple and healthy-looking hair.  
長效塑造完美柔韌水潤的健康髮質。

With brilliant color protection, Keratin and Hyaloveil®.  
高效護色，蘊含角蛋白及Hyaloveil®陽離子透明質酸。

IN-SALON  
髮廊使用



### RECONSTRUCT SHAMPOO 水韌洗髮露

- Gently cleanses and nourishes  
溫和潔淨及滋潤秀髮



### RECONSTRUCT CONDITIONER 水韌護髮素

- Nourishes, softens  
and conditions  
滋潤、柔滑及修護



### INTENSIVE REPAIR MASK 極致修護髮膜

- Fortifies, reconstructs and  
enhances resilience  
強韌及修復受損秀髮
- Provides long-lasting moisture  
and protection from  
recurring dryness  
為乾旱髮質提供持久滋潤和保護



### INTENSIVE REPAIR PRE-TREATMENT 極致修護護理(前段)

- Reinforces and replenishes  
extremely stressed areas of  
the hair  
為特別受損部分加強修護及  
補充水分



### INTENSIVE REPAIR TREATMENT 極致修護護理(後段)

- Provides long-lasting nourishment  
提供長效滋潤
- Replenishes and reinforces the strength of each hair strand  
補充及加強髮絲的強韌度
- Customize with Reconstruct Intensive Repair Pre-Treatment  
配合極致修護護理(前段)使用

# KERASILK

## RECONSTRUCT 絲蛋白水韌系列

HOME CARE  
家居護理



### RECONSTRUCT SHAMPOO 水韌洗髮露

### RECONSTRUCT CONDITIONER 水韌護髮素

### INTENSIVE REPAIR MASK 極致修護髮膜



### REGENERATING BLOW-DRY SPRAY 水韌修護噴霧

- Instant combability and repair  
for a soft, weightless feel  
修護髮絲，令頭髮即時順滑  
易梳，觸感無重柔軟
- Provides heat protection  
提供抗熱保護



### RESTORATIVE BALM 水韌修復乳霜

- Improves hair elasticity and  
prevents dryness and  
hair breakage  
改善秀髮的彈性，預防髮絲  
乾旱斷裂
- Provides heat protection  
提供抗熱保護



### SPLIT ENDS RECOVERY CONCENTRATE 水韌髮尾修復精華

- Nourishes dry ends and binds  
split ends back together  
為乾旱髮尾提供充足養分，  
修復髮尾開叉
- Forms a protective layer around  
each hair strand for suppleness  
and healthy shine  
為開叉髮尾加上一層保護膜，  
令髮絲回復亮澤，健康飽滿



### RECONSTRUCT BEAUTIFYING HAIR PERFUME 傲然爾雅美髮香水

- A precious magnolia jasmine  
blend restores a freshly-washed  
hair scent, while masking  
and shielding against  
unpleasant odors  
揉合珍貴的木蘭花和茉莉花  
香氣，同時為髮絲提供防禦，  
將令人不悅的氣息隔開
- Helps to maintain a silky hair feel  
and a touch of shine, while  
preventing static  
讓髮絲保持如絲般的觸感和光澤，  
同時預防靜電



# KERASILK

## REPOWER 絲蛋白育髮系列

For fine, limp hair.  
適合幼細、扁塌髮質。

Long-lasting transformation into perfectly bodified hair.<sup>1</sup>  
長效塑造完美豐厚秀髮<sup>1</sup>。

With brilliant color protection, Keratin and Elastin.  
高效護色，蘊含角蛋白及彈性蛋白。

IN-SALON  
髮廊使用



### VOLUME SHAMPOO 豐盈洗髮露

- Gentle, lightweight cleansing  
溫和輕盈潔淨
- Perfect foundation for body and fullness  
為豐盈頭髮打好基礎



### INTENSIVE VOLUME TREATMENT 極致豐盈護理(前段)

- Provides long-lasting volume, body and strength  
長效豐盈、強韌髮質
- Customize with Repower Volume Intensifying Post Treatment  
配合極致豐盈護理(後段)使用



### VOLUME INTENSIFYING POST TREATMENT 極致豐盈護理(後段)

- Concentrated post-treatment for an additional volume boost  
提升豐盈感的長效護理

# KERASILK

## REPOWER 絲蛋白育髮系列

HOME CARE  
家居護理



### VOLUME SHAMPOO 豐盈洗髮露

- Gentle, lightweight cleansing  
溫和輕盈潔淨
- Perfect foundation for body and fullness  
為豐盈頭髮打好基礎



### VOLUME FOAM CONDITIONER 豐盈護髮泡沫

- Conditions without adding weight  
無重修護秀髮
- Enhances resilience and elasticity  
增加頭髮柔韌度和彈性



### VOLUME BLOW-DRY SPRAY 豐盈噴霧

- Blow-dry foundation with heat protection for instant combability, easy styling and volumized hair  
配合吹髮使用的打底噴霧，提供抗熱保護。即時令頭髮順滑易梳，使頭髮更易造型，塑造出蓬鬆感



### VOLUME PLUMPING CREAM 豐盈乳霜

- Instantly smooth, yet perfectly volumized hair  
即時順滑同時豐盈秀髮
- Enhanced body and soft hold  
增加蓬鬆感及提供輕盈支撐度
- With heat protection  
具抗熱保護



### VOLUME DRY SHAMPOO<sup>1</sup> 豐盈清爽噴霧<sup>1</sup>

- Cleanses and refreshes without the need for water  
毋須沖洗仍能潔淨髮絲
- Absorbs unwanted oil and residues, giving hair a light, volumizing effect  
吸走髮絲上的多餘油脂和殘餘物，使髮絲回復清爽無重，帶來自然豐盈效果



Conserve Water<sup>2</sup>  
節約用水<sup>2</sup>



### REPOWER BEAUTIFYING HAIR PERFUME 活力清新美髮香水

- Delicate freesia lily nuances restore a freshly-washed hair scent, while masking and shielding against unpleasant odors  
雅緻的小蒼蘭和百合花香調讓髮絲回復洗髮後的清幽芳香，同時為髮絲提供防禦，將令人不悅的氣息隔開
- Helps to maintain a silky hair feel and a touch of shine, while preventing static  
讓髮絲保持如絲般的觸感和光澤，同時預防靜電



# KERASILK

## COLOR 絲蛋白亮色系列

For color-treated hair.  
適合染後髮質。

Long-lasting transformation into exceptional color brilliance for up to 6 weeks.<sup>1</sup>  
長效保持髮色持久亮澤<sup>1</sup>。

For brilliant color protection. With Keratin and Tamanu Oil.  
高效護色，蘊含角蛋白及瓊崖海棠油。

IN-SALON  
髮廊使用

 <p><b>COLOR GENTLE SHAMPOO</b> 亮色洗髮露</p> <ul style="list-style-type: none"><li>Gently cleanses while preventing premature color fading 溫和潔淨頭髮，同時防止頭髮過早褪色</li></ul>	 <p><b>COLOR CONDITIONER</b> 亮色護髮素</p> <ul style="list-style-type: none"><li>Moisturizes, conditions and enhances color brilliance 保濕、修護同時增加髮色光澤</li></ul>
 <p><b>INTENSIVE LUSTER MASK</b> 極致亮澤髮膜</p> <ul style="list-style-type: none"><li>Adds moisture and deeply conditions for healthy-looking hair and long-lasting color depth and brilliance 保濕及深層修護，令頭髮看起來更健康，長效保持髮色濃度及光澤度</li></ul>	 <p><b>BRILLIANCE PRIMER</b> 亮色染前噴霧</p> <ul style="list-style-type: none"><li>Primes the hair surface and restores the inner hair structure to its optimal condition during the coloring process 修復頭髮內部結構，於染髮時將髮絲表層調整至最佳狀態</li></ul>
 <p><b>BRILLIANCE CREATOR</b> 亮色修護霜</p> <ul style="list-style-type: none"><li>Neutralizes alkalinity and locks dyes and active ingredients from Kerasilk Color Brilliance Primer, resulting in prolonged color results and fortified bonds 中和鹼性染劑、鎖緊色素及亮色染前噴霧中的活性成分，有效延長髮色效果及強化鏈鎖</li></ul>	 <p><b>CLEANSING CONDITIONER</b> 亮色潔淨護髮乳</p> <ul style="list-style-type: none"><li>Gentle cleansing and care 同時溫和潔淨及修護髮絲</li><li>Adds moisture to preserve color vibrancy 能滋潤髮絲，使髮色持久亮澤</li></ul>
 <p><b>BRILLIANCE SEALER</b> 亮色鎖色修護精華</p> <ul style="list-style-type: none"><li>Seals in color and intensifies vibrancy of color-treated hair 有效鎖住髮色，使染後髮色更鮮明</li><li>Smooths the surface of the hair for long-lasting silky hair feel, and shields the hair from UV radiation 順滑頭髮表層，使秀髮長效如絲般柔滑，為髮絲防禦紫外光的傷害</li></ul>	

# KERASILK

## COLOR 絲蛋白亮色系列

HOME CARE  
家居護理

 <p><b>COLOR GENTLE SHAMPOO</b> 亮色洗髮露</p> <p><b>COLOR CONDITIONER</b> 亮色護髮素</p> <p><b>INTENSIVE LUSTER MASK</b> 極致亮澤髮膜</p>	
 <p><b>CLEANSING CONDITIONER</b> 亮色潔淨護髮乳</p> <ul style="list-style-type: none"><li>Gentle cleansing and care 同時溫和潔淨及修護髮絲</li><li>Adds moisture to preserve color vibrancy 能滋潤髮絲，使髮色持久亮澤</li></ul> <p> Conserve Water<sup>2</sup> 節約用水<sup>2</sup></p>	 <p><b>GENTLE DRY SHAMPOO<sup>1</sup></b> 亮色清爽噴霧</p> <ul style="list-style-type: none"><li>Cleanses and refreshes without the need for water 毋須沖洗仍能潔淨髮絲</li><li>Protects color from premature fade-out while maintaining shine 預防頭髮過早褪色，同時保持髮色亮澤</li></ul>
 <p><b>BRILLIANCE PERFECTOR</b> 亮色修護油</p> <ul style="list-style-type: none"><li>Lightweight oil for all hair types. 輕盈無比的修護油，適合所有髮質使用</li><li>Smooths the surface of the hair, provides extraordinary shine and prolongs color brilliance 能順滑髮絲表層，帶來非凡的光澤及使髮色持久亮麗</li><li>Shields from UV radiation 防禦紫外光</li></ul>	 <p><b>PROTECTIVE BLOW-DRY SPRAY</b> 亮色噴霧</p> <ul style="list-style-type: none"><li>Instant combability and shine - for a soft feel and brilliant finish 即時順滑及亮澤髮絲，令秀髮柔軟有光澤</li><li>Provides heat and UV protection 提供抗熱及抗紫外光保護</li></ul>



# KERASILK

## STYLE 絲蛋白造型系列

Perfect styling with the touch of silk.  
For perfect and lasting styling results with an exceptionally soft touch.  
帶來如絲般觸感的完美造型，效果長久兼柔滑無比。

With Keratin and precious silk protein.  
蘊含角蛋白和珍貴的絲蛋白成分。

### ACCENTUATING FINISH CRÈME 柔順閃亮造型乳霜



- For an excellent final touch  
帶來無可比擬的柔滑觸感
- Leaves the hair with a weightless, shiny finish  
賦予造型無重光澤
- Perfectly smoothes flyaways  
完美地順服毛躁髮絲

### FIXING EFFECT HAIRSPRAY 絲感定型噴霧



- For long-lasting weightless, touchable hold  
用於創造長效無重及可重塑的造型
- Leaves the hair with a silky finish and amazing brilliance  
讓髮絲如絲般的柔滑和帶來無比的亮澤效果

### TEXTURIZING FINISH SPRAY 絲感塑型噴霧



- For flexible and restyleable hold with a weightless, silky feel  
提供富彈性、可重塑及無重的支撐，使造型如絲般柔滑
- Leaves the hair with a shiny finish. Provides heat protection  
為髮絲帶來光澤，並提供抗熱保護

### FORMING SHAPE SPRAY 抗熱曲髮造型噴霧



- For luxurious hot tool styles with weightless movement  
配合熱塑工具，為造型創造無重動感
- Flexible usage to create sleek or curly looks  
可靈活使用於創造柔亮或鬆曲造型
- Provides heat protection  
提供抗熱保護

### SMOOTHING SLEEK SPRAY 柔順抗熱直髮噴霧



- For an amazingly sleek finish with a remarkably weightless, silky feel  
為造型帶來無重光澤，感覺柔滑如絲
- Perfectly speeds up hot ironing and smoothes flyaways  
縮短使用直髮夾創造柔順直髮的時間
- Provides heat protection  
提供抗熱保護

### ENHANCING CURL CRÈME 柔順鬆曲造型乳霜



- For refined and exceptionally bundled curls  
使曲髮效果更立體和富束感
- Smoothes the curls and controls frizz  
順滑曲髮及撫平毛躁
- Provides heat protection  
提供抗熱保護

### BODIFYING VOLUME MOUSSE 極致豐盈泡沫



- For gorgeous voluminous styles with a weightless, silky feel  
可創造無重、如絲般瑰麗的豐盈造型
- Provides heat protection  
提供抗熱保護





# DUALSENSES

## THE INSTANT CARE EXPERT WITH A PASSION FOR COLOR 對髮色充滿熱誠、護理即時見效的專家

Delivers instant results - visible and touchable. With built-in color protection in all products<sup>1</sup> and an innovative color technology for magnificent luminosity.

帶來即時看得見和觸摸得到的效果，整個系列的產品<sup>1</sup>均具鎖色功效，以及革命性的髮色科技，帶來明艷亮麗的髮色。



PROFESSIONAL  
SOLUTIONS FOR  
EVERY HAIR TYPE  
適合每一種髮質的專業  
護理方案

INSTANTLY VISIBLE  
AND TOUCHABLE  
RESULTS  
能即時看見和觸摸  
得到的效果

BUILT-IN COLOR  
PROTECTION  
具鎖色功效

### TECHNOLOGY 科技

#### microPROtec complex 微細護髮複合物

The innovative microPROtec complex with built-in color protection<sup>1</sup> distributes essential care ingredients quickly and evenly for instant results you can see and feel.

革命性的微細護髮複合物，揉合鎖色功效<sup>1</sup>，能將主要的護髮成分迅速均勻地滲入髮芯，帶來即時看見和感受到的美髮效果。

#### FadeStopFormula 不褪色配方

As gentle as pure water: The improved FadeStopFormula is included in all of our shampoos<sup>2</sup> achieving exceptional reductions in color wash-out during shampooing.

所有Dualsenses的洗髮露<sup>2</sup>均揉合了經改良的不褪色配方，洗髮時能顯著地將褪色情況減至最少。

#### Luminescine 髮色亮麗因子

Our unique color technology - containing Luminescine in all 3 of our Dualsenses color segments - is the next generation of color luminosity.

Dualsenses的三個髮色護理系列包括無重鎖色系列、滋潤鎖色系列及冷色亮色系列，均揉合了品牌獨有的鎖色科技——髮色亮麗因子，為亮麗髮色寫下新定義。

The Luminescine technology transforms non-visible UV light into visible light for magnificent brilliance. 髮色亮麗因子能將肉眼看不見的紫外光轉化成可以看見的光芒，突顯染後的髮色，使髮色更耀眼。

<sup>1</sup>Contained in all of our products, except Dualsenses Ultra Volume Bodifying Dry Shampoo, Scalp Specialist Sensitive Foam Shampoo & Anti-Hair Loss Serum.

揉合於所有產品中，飄逸豐盈清爽噴霧、防敏洗髮泡沫和防脫髮精華除外

<sup>2</sup>Except Scalp Specialist Shampoos.  
頭皮療護系列中的洗髮露除外



# DUALSENSES

## COLOR 無重鎖色系列

For fine to normal hair.  
適合幼細至一般髮質。

With **Luminescine.**  
蘊含髮色亮麗因子。

### BRILLIANCE SHAMPOO 無重鎖色洗髮露



Instantly brings out color luminosity.  
即時增加髮色亮澤

FadeStopFormula minimizes color fading with every use.  
不褪色配方於每次使用時將褪色情況減至最少



250ml bottle 98% recyclable<sup>1</sup>  
250ml膠瓶：可回收再造率98%<sup>1</sup>

### BRILLIANCE CONDITIONER 無重鎖色護髮素



Detangles instantly.  
即時順滑髮絲

Creates color luminosity.  
亮澤髮色

### BRILLIANCE SERUM SPRAY 無重鎖色噴霧



Instantly provides weightless conditioning.  
即時無重修護髮絲

Creates a new color gleam.  
為髮色締造閃耀效果

With heat protection.  
提供抗熱保護

### 60SEC TREATMENT 60秒無重鎖色髮膜



Regenerates instantly.  
即時重建髮絲

Amplifies hair luminosity.  
增加頭髮亮澤度

### INTENSIVE CONDITIONING SERUM 無重鎖色倍效精華



Locks in color instantly and keeps salon color vibrant for up to 22 washes. Provides weightless care and combability.  
即時鎖緊髮色，將髮廊鮮明的染髮效果維持達22次洗髮。提供無重修護，令頭髮更易梳理

# DUALSENSES

## COLOR EXTRA RICH 滋潤鎖色系列

For thick to coarse hair.  
適合濃厚或粗糙髮質。

With **Luminescine.**  
蘊含髮色亮麗因子。

### BRILLIANCE SHAMPOO 滋潤鎖色洗髮露



Instantly brings out color luminosity.  
即時增加髮色亮澤

FadeStopFormula minimizes color fading with every use.  
不褪色配方於每次使用時將褪色情況減至最少



250ml bottle 98% recyclable<sup>1</sup>  
250ml膠瓶：可回收再造率98%<sup>1</sup>

### BRILLIANCE CONDITIONER 滋潤鎖色護髮素



Detangles instantly.  
即時順滑髮絲

Creates color luminosity.  
亮澤髮色

### 6 EFFECTS SERUM 滋潤鎖色多效精華



Dramatic color luminosity.  
髮色變得亮澤，效果顯著

Instantly provides shine and healthy looking lengths and ends for thick to coarse hair.  
即時令秀髮倍添光澤，看起來更健康，濃厚及粗糙髮質變得柔順

### 60SEC TREATMENT 60秒滋潤鎖色髮膜



Regenerates instantly.  
即時重建髮絲

Amplifies luminosity.  
增加頭髮亮澤度

### INTENSIVE CONDITIONING SERUM 滋潤鎖色倍效精華



Locks in color instantly and keeps salon color vibrant for up to 22 washes. Provides care, manageability, softness and combability.  
即時鎖緊髮色，將髮廊鮮明的染髮效果維持達22次洗髮。提供修護，令頭髮柔軟及更易梳理

<sup>1</sup>Recyclability may differ from country to country.  
可再造回收率的標準在不同國家可能有所差異

<sup>1</sup>Recyclability may differ from country to country.  
可再造回收率的標準在不同國家可能有所差異



# DUALSENSES

## BLONDES & HIGHLIGHTS 冷色亮色系列

For blonde and highlighted hair.  
適合天生金髮、染淺或挑染髮質。

With **Luminescine**.  
蘊含髮色亮麗因子。



### ANTI-YELLOW SHAMPOO 冷色去黃洗髮露

Instantly brings out color luminosity.  
即時增加髮色亮澤

Neutralizes unwanted yellow tones.  
中和淺色頭髮出現的黃銅色調

FadeStopFormula minimizes color fading with every use.  
不褪色配方於每次使用時將褪色情況減至最少



250ml bottle 98% recyclable<sup>1</sup>  
250ml膠瓶：可回收再造率98%<sup>1</sup>



### ANTI-YELLOW CONDITIONER 冷色去黃護髮素

Detangles immediately.  
即時順滑髮絲

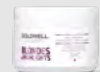
Neutralizes unwanted yellow tones.  
中和淺色頭髮出現的黃銅色調



### BRILLIANCE SERUM SPRAY 冷色亮色噴霧

Instantly provides combability.  
秀髮即時變得順滑容易打理

With heat protection.  
為髮絲提供抗熱保護



### 60SEC TREATMENT 60秒冷色亮色髮膜

Regenerates instantly.  
即時更生頭髮細胞

Neutralizes unwanted yellow tones.  
中和淺色頭髮出現的黃銅色調



### INTENSIVE CONDITIONING SERUM 冷色去黃倍效精華

Locks in color instantly and keeps salon color vibrant for up to 22 washes. Enhances contrast and highlights. Provides instant care and detangling.  
即時鎖緊髮色，將髮廊鮮明的染髮效果維持達22次洗髮。提升對比和挑染效果，即時修護及順滑髮絲

# DUALSENSES

## COLOR REVIVE 延彩補色系列

Refreshes salon color in-between salon visits.  
維持髮廊染髮效果亮麗鮮明。

Perfectly complements Goldwell color. For long-lasting, beautiful color.  
完美地配合Goldwell髮色，帶來持久亮麗的色彩。



### COLOR GIVING CONDITIONER 延彩補色護髮素

For reviving beautiful blonde, elegant brown and vibrant red.  
把亮眼的金色、高雅的啡色及鮮明的紅色煥然一新

4 selected shades that are perfectly tailored to match the most beloved Goldwell shades:  
4款精選色調，完美地配合大部分Goldwell受歡迎的色調：

Icy Blonde, Light Cool Blonde, Cool Brown, Cool Red  
灰金色、冷金色、冷啡色及冷紅色



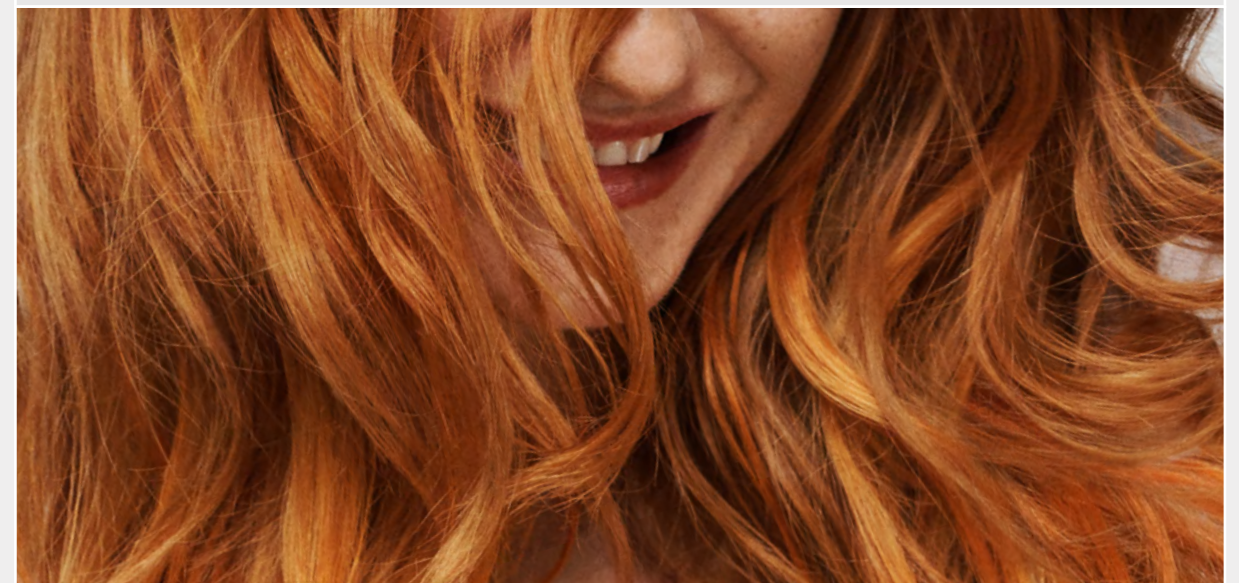
### ROOT RETOUCH POWDER 髮根補色粉

Instant grey and root coverage.  
即時遮蓋髮根新生及灰白髮

Available in 2 shades, the smooth powder perfectly blends into Goldwell hair color for a beautiful natural look, whilst absorbing oil and sebum for a refreshing hair feel.

備有兩種色調，柔滑的補色粉完美地融入Goldwell髮色中，帶來美麗自然的髮色效果，同時可吸收髮根的多餘油脂，令頭髮保持清新

Medium Brown and Dark Brown  
啡棕色和深褐色





# DUALSENSES

## BOND PRO 髮芯強韌系列

For weak, fragile hair that is prone to breakage.  
適合容易折斷的脆弱髮質。

With **Inter-Amino-Bond-BUILDER**.  
蘊含**氨基酸鍵鎖鞏固科技**。

### FORTIFYING SHAMPOO 髮芯強韌洗髮露

Instantly provides care and structure.  
即時提供修護和鞏固頭髮結構

The unique FadeStop-Formula  
minimizes color fading with  
every use.  
獨有的不褪色配方於每次使用時  
將褪色情況減至最少



250ml bottle 98% recyclable<sup>1</sup>  
250ml 膠瓶：可回收再造率98%<sup>1</sup>

### FORTIFYING CONDITIONER 髮芯強韌護髮素

For instantly stronger hair.  
即時使髮絲變得更強韌

Visibly reduces breakage.  
顯著地減少頭髮折斷



### REPAIR & STRUCTURE SPRAY 髮芯強韌修護噴霧

Long-lasting cuticle protection  
activated with heat during blow dry.  
吹髮時的熱力能激活對頭髮角質層的  
長效保護

Resilience against day-to-day  
stressors.  
回復頭髮因日復日環境侵害而失去的  
彈性

Preps for styling.  
為造型作好打根基

With heat protection.  
提供抗熱保護



Recycled (PCR) PET  
回收再造的PET (PCR)

### DAY & NIGHT BOOSTER 髮芯強韌強效精華

Supports the bond-protein  
network.  
支撐蛋白鍵鎖網絡

For hair that is up to 10 times  
more resilient.  
增加頭髮彈性高達10倍

Reduces breakage and split ends  
by 99%.  
減少99%頭髮折斷和開叉

For long-lasting strength and  
stability of each individual strand.  
長效強韌、鞏固每一根髮絲



Recycled (PCR) PET  
回收再造的PET (PCR)

### 60SEC TREATMENT 60秒髮芯強韌護髮膜

Instantly strengthens the hair fiber up to 100%.  
能於60秒內即時強韌頭髮纖維達100%

Prevents breakage without weighing down.  
有效預防折斷而不會使頭髮負重



<sup>1</sup>Recyclability may differ from country to country.  
可再造回收率的標準在不同國家可能有所差異



# DUALSENSES

## RICH REPAIR 特效修護系列

For dry to damaged hair.  
適合乾性至受損髮質。

With **IntraLipid**.  
揉合專利脂質配方**IntraLipid**科技。

### RESTORING SHAMPOO 特效修護洗髮露



Instantly reconstructs and reawakens the shine of natural hair.  
即時重建及喚醒秀髮的自然健康光澤

Minimizes color fading.  
將褪色情況減至最少



250ml bottle 98% recyclable<sup>1</sup>  
250ml膠瓶：可回收再造率98%<sup>1</sup>

### RESTORING CONDITIONER 特效修護護髮素



Instantly increases combability.  
髮絲即時變得順滑及容易打理

Effectively reduces hair breakage.  
有效減少頭髮折斷

### 60SEC TREATMENT 60秒特效修護髮膜

Restores severely damaged hair structures from deep inside.  
使受損髮絲從髮芯到表層均回復健康

Rebuilds the hair fiber.  
重建頭髮纖維



### INTENSIVE CONDITIONING SERUM 特效修護倍效精華



Deeply nourishes and repairs the hair from inside out for up to 95% less breakage. Instantly hydrates hair and provides a smoother hair surface.  
從內至外深層滋養及修復髮絲達至減少95%折斷，為頭髮即時補濕，使髮絲表面更順滑

# DUALSENSES

## ULTRA VOLUME 飄逸豐盈系列

For fine to limp hair.  
適合幼細及扁塌髮質。

With **Rice Protein**<sup>1</sup>.  
蘊含**大米蛋白**<sup>1</sup>。

### BODIFYING SHAMPOO 飄逸豐盈洗髮露



Instantly builds touchable and visible volume.  
即時建立看得見及觸摸得到的豐盈效果

Enhances natural shine.  
提升自然光澤

Minimizes color fading.  
將褪色情況減至最少



250ml bottle 98% recyclable<sup>2</sup>  
250ml膠瓶：可回收再造率98%<sup>2</sup>

### BODIFYING DRY SHAMPOO 飄逸豐盈清爽噴霧



Instantly revives volume by absorbing excess oil.  
吸收多餘油脂，令秀髮即時回復豐盈

Reduces build-up between washes.  
減少在兩次洗髮之間髮絲上的殘留物

### BODIFYING CONDITIONER 飄逸豐盈護髮素



Instantly detangles and builds touchable and visible volume.  
即時順滑髮絲，同時建立看得見和觸摸得到的豐盈效果

Provides weightless care.  
無重修護

### INTENSIVE CONDITIONING SERUM 飄逸豐盈倍效精華



Instant weightless care for a strengthened hair feel from roots to tips.  
即時無重修護髮絲，從髮根到髮尾強韌髮絲

Healthier-looking hair for up to one week.  
髮絲感覺更健康，效果可持續達一星期

Ideal care foundation with heat protection.  
具抗熱保護，是最佳的基本護理產品

<sup>1</sup>Recyclability may differ from country to country.  
可再造回收率的標準在不同國家可能有所差異

<sup>1</sup>Dualsenses Ultra Volume Bodifying Dry Shampoo does not contain Rice Protein.  
飄逸豐盈清爽噴霧不含大米蛋白

<sup>2</sup>Recyclability may differ from country to country.  
可再造回收率的標準在不同國家可能有所差異



# DUALSENSES

## CURLS & WAVES 水潤鬆曲系列

For naturally wavy, curly and permed hair.  
適合自然鬆曲及電燙髮質。

With **Milk Protein.**  
蘊含牛奶蛋白。

### HYDRATING SHAMPOO 水潤鬆曲洗髮露



Instantly cleanses and hydrates without drying out. For defined and weightless bounce. 即時潔淨和保濕髮絲，使頭髮不會變乾，令曲髮更立體、變得無重兼富彈性

The unique FadeStop-Formula minimizes color fading with every use. 獨有的不褪色配方於每次使用時將褪色情況減至最少



250ml bottle 98% recyclable<sup>1</sup>  
250ml膠瓶：可回收再造率98%<sup>1</sup>

### HYDRATING CONDITIONER 水潤鬆曲護髮素



Instantly hydrates, detangles and softens without adding weight. 即時無重保濕、柔順及軟化髮絲



# DUALSENSES

## SCALP SPECIALIST 頭皮療護系列

For sensitive scalp and thinning hair.  
適合敏感頭皮及稀疏髮質。

With **Octopirox<sup>1</sup>**, **Lime Tree Blossom Extract<sup>1</sup>**, **Zinc-PCA<sup>1</sup>** or **t-Flavanone<sup>1</sup>** depending on product.  
個別產品蘊含**Octopirox**抗菌成分<sup>1</sup>、菩提樹花萃取精華<sup>1</sup>、**Zinc-PCA**複合物或**t-Flavanone**<sup>1</sup>。

### ANTI-DANDRUFF SHAMPOO 去屑洗髮露



**For visible dandruff**  
適用於受頭屑困擾的頭皮

Instantly fights visible dandruff. 即時去除礙眼的頭屑

Regulates the scalp function. 舒緩及平衡頭皮狀況



98% recyclable<sup>2</sup>  
回收再造率98%<sup>2</sup>

### DEEP CLEANSING SHAMPOO 深層潔淨洗髮露



**For oily scalp**  
適用於油性頭皮

Provides a fresh scalp feeling. 令頭皮感覺清爽

Removes styling residues, sebum and chlorine. 深層潔淨造型殘餘物、油脂及氯氣



250ml bottle 98% recyclable<sup>2</sup>  
250ml膠瓶：可回收再造率98%<sup>2</sup>

### DEEP CLEANSING SCALP PEELING 防脫髮洗髮露深層清潔頭皮去角質液



**For all hair types**  
適用於所有髮質

Instantly clean and fresh scalp feeling. 深層清潔頭皮，溫和潔淨毛孔

Helps to fight quick regreasing 立即去除油脂

Perfect to use with other scalp specialist products 完美配合其他頭皮護理產品使用

### SENSITIVE FOAM SHAMPOO 防敏洗髮泡沫



**For sensitive scalp**  
適用於敏感頭皮

Gently cleanses and instantly soothes for a rebalanced scalp. 能溫和地潔淨頭髮，即時舒緩頭皮，讓頭皮回復平衡

Free from fragrances and pH neutral. 不含香料，中性pH值

### SENSITIVE SOOTHING LOTION 防敏舒緩乳液



**For sensitive scalp**  
適用於敏感頭皮

Instantly soothes and conditions sensitive scalps. 即時舒緩及護理敏感頭皮

Ideal after chemical services. 尤其適合於染燙後使用

### ANTI-HAIR LOSS SHAMPOO 防脫髮洗髮露



**For thinning hair**  
適用於稀疏髮質

Cleanses gently. 溫和潔淨

Supports natural hair growth. 促進頭髮自然生長

### ANTI-HAIR LOSS SERUM 防脫髮精華



**For thinning hair**  
適用於稀疏髮質

Effectively prevents hereditary hair loss with regular use. 持續使用，有效預防遺傳性脫髮

Thickens the hair fiber instantly and supports the anchoring of the hair in the scalp. 即時令頭髮纖維變得更粗壯，強化髮根與頭皮間的支撐力



# DUALSENSES

## MEN 男士系列

Perfect for men. Visibly healthy-looking, strong hair and noticeably more vitality.  
RechargeComplex with **Guarana, Caffeine** and Instant Microfluid Technology.

理想的男士頭髮護理產品。使頭髮顯著回復健康強韌，為髮絲加添活力。  
揉合**瓜拉拿、咖啡因複合物**和微晶球驅動科技。

### HAIR & BODY SHAMPOO 男士雙效洗髮沐浴露



**For strong, healthy-looking hair every day**  
適合一般髮質每天使用，以達至健康強韌效果

Cleanses, revitalizes and moisturizes the skin and hair.  
潔淨、賦活及滋潤頭髮和皮膚



250ml bottle 98% recyclable<sup>1</sup>  
250ml 膠瓶：可回收再造率98%<sup>1</sup>

### THICKENING SHAMPOO 男士強韌洗髮露



**For fine and thinning hair**  
適合幼細及薄弱髮質

Gentle cleansing.  
溫和潔淨

For instantly strong and healthy-looking hair from the roots.  
從髮根到髮尾，即時變得強韌健康



98% recyclable<sup>1</sup>  
回收再造率98%<sup>1</sup>







# STYLESIGN

## GUARANTEED SIGNATURE STYLES

### 塑造標誌性的造型

Easy-to-use and reliable products that simplify your styling routine, whilst protecting your client's hair from heat, premature color fade & UV light.

簡單易用而可靠的產品，簡化你的造型程序，同時保護你客人的頭髮免受熱力及紫外光的傷害，和避免髮色過早褪色。



PROFESSIONAL'S  
CHOICE FOR  
GUARANTEED  
SIGNATURE STYLES  
塑造標誌性造型的專業之選

EASY-TO-USE  
AND RELIABLE  
簡單易用且可靠

NATURAL AND  
FLEXIBLE HOLD  
自然及具彈性的支撐

### THE FLEXPROTEC COMPLEX

#### 立體塑型護髮複合物

1. Product-specific styling polymers and bamboo proteins create any desired look and help to keep the style natural and flexible.

揉合針對和各種造型需要的造型聚合物和青竹蛋白，創造理想造型之餘，亦可有助保持造型自然和靈活性。

2. A unique elastomer and UV filter in all products help protect hair from premature color fade, damaging effects of heat styling and UV-light. The hair surface is smoothened to enhance natural shine.

所有產品均揉合了獨有的高彈性塑料和光濾網，有助保護髮絲，預防頭髮過早褪色，和免受電熱工具造成的損害，使頭髮表層變得順滑，提升自然光澤。



# STYLESIGN

## ULTRA VOLUME 飄逸豐盈系列

Specially developed to give fine, limp and/or normal hair an impressive volume boost.  
特別為幼細、扁塌及 / 或一般髮質研發，能締造豐盈立體造型。



### POWER WHIP Strengthening Mousse 強韌豐盈泡沫

For fine to normal hair.  
適合幼細和一般髮質

Gives strong hold and long-lasting volume.  
提供強效定型和長效豐盈

Improves grip.  
改善抓握感



### GLAMOUR WHIP Brilliance Styling Mousse 閃亮豐盈泡沫

For dull and stressed hair.  
適合暗啞和受損髮質

Adds volume with strong, yet flexible hold.  
令髮絲更豐盈，同時帶來強效而富彈性的定型效果

Provides extra care and luminosity.  
提供額外呵護和增加亮度



### DOUBLE BOOST Intense Root Lift Spray 倍效豐盈髮根噴霧

For fine and limp roots.  
適合幼細和扁塌頭髮

Invigorates and adds instant root lift.  
為髮絲增添活力，即時提升髮根



### DUST UP Volumizing Powder 豐盈鹽粉

Creates instant body, boosts texture  
and adds grip.

瞬間建立豐盈效果，加強質感和抓握感



### NATURALLY FULL Blow-Dry & Finish Bodifying Spray 自然豐盈吹髮噴霧

In towel-dried hair: Enhances grip for  
a beautiful, volume blow-out.  
為提升毛巾拭乾的濕髮提升抓握感和豐盈感

In dry hair: provides pliable fullness  
and body.  
為乾髮帶來柔韌豐盈的效果

Effect can be revived by scrunching hair.  
可抓揉髮絲加強豐盈效果



### SOFT VOLUMIZER Volume Blow-Dry Spray 柔順豐盈吹髮噴霧

Gives natural volume and long-  
lasting shape.  
可用於塑造自然豐盈而持久的造型

Strong as a volume mousse, simple as  
a spray.  
如豐盈泡沫般強效，但如噴霧般簡單易用



### BODY PUMPER Densifying Pump Foam 豐盈增量泡沫

Gives fine and thinning, short to  
shoulder length hair twice as much body  
and a massive volume boost.  
適合幼細薄弱的髮質，短髮到中長髮使用。  
能增加高達兩倍頭髮豐厚度，達至顯著的  
豐盈效果

Densifies and thickens for a "more hair feel".  
使頭髮感覺更濃密和豐厚，彷彿增生了  
更多頭髮一樣



### LAGOOM JAM Styling Gel 豐盈造型啫喱

For bold and unlimited looks.  
適合創作前衛大膽及沒有規範的造型

Builds volume and texture with powerful  
long-lasting hold.  
提供強效持久定型，為髮絲建立豐盈感  
和質感



# STYLESIGN

## JUST SMOOTH 輕感柔順系列

Ideal for normal to coarse hair structures to create smooth to super straight styles.  
尤其適合一般至粗糙髮質，創造柔順直髮造型。



### SLEEK PERFECTION Thermal Spray Serum 柔順抗熱精華噴霧

For long-lasting, silky-straight hair.  
帶來長效如絲般的直髮效果

Provides heat protection up to 200°C.  
提供高達200°C的抗熱保護

Humidity protection for up to 24 hours.  
具有長達24小時的抗潮濕保護



### SMOOTH CONTROL Smoothing Blow Dry Spray 柔順快乾塑型噴霧

Speeds up drying time.  
加速乾髮時間

Improves manageability for smooth and  
responsive styling.  
為塑造順滑造型改善控制度

Shapes the hair and gives light hold.  
塑造立體造型，提供輕柔定型



### SOFT TAMER Taming Lotion 輕感抗毛躁乳液

Provides care and a glossy finish.  
能護理髮絲，帶來閃亮效果

Tames flyaways and reduces frizz.  
有效順服和減少毛躁

For a smooth finish with brilliant shine.  
帶來柔順、閃亮耀眼的效果



### DIAMOND GLOSS Protect & Shine Spray 柔順閃亮噴霧

For a silky-smooth and glossy finish.  
為髮絲帶來如絲的柔滑感和閃亮的光彩

Effectively blocks humidity for up to  
72 hours.  
提供長達72小時的抗潮保護

Tames frizz and provides intensive shine.  
順滑毛躁，大大增加亮澤感



3 Hold factor 0-5  
定型因子0-5

Water drop icon Use on towel-dried hair  
用於毛巾拭乾的頭髮

Crossed-out water drop icon Use on dry hair  
用於乾髮



# STYLESIGN

## CURLS & WAVES 水潤鬆曲系列

Perfect for curl hydration, taming different curl types or curl creation in straight hair.  
締造水潤曲髮，順服各種曲髮的毛躁和為直髮創造鬆曲造型。

### SURF OIL Salty Oil Spray 雙效水潤鬆曲順髮噴霧



For big bundled curls or waves.  
用於塑造鬆度大的曲髮或波浪造型  
Adds beautiful body and texture.  
加添流麗質感

Perfectly hydrates.  
為造型增添水潤效果



### TWIST AROUND Curl Styling Spray 水潤鬆曲束感噴霧



2in1 mist for long-lasting, yet flexible  
curls and waves with heat protection.  
用於創造持久而富彈性的曲髮和波浪  
造型，並具抗熱保護的二合一噴霧

For straight hair or to refine natural curls  
and waves.  
可用於直髮或使自然曲髮及波浪更立體

Use as a finishing-spray for the long-haul.  
可用作定型噴霧使造型效果更持久



### CURL CONTROL Moisturizing Curl Cream 水潤鬆曲造型乳霜



For normal to coarse curls.  
適合一般至粗糙的曲髮

Provides instant moisture for  
healthy-looking and defined curls.  
即時保濕使曲髮感覺更健康和有束感



### SOFT WAVER Lightweight Wave Fluid 水潤鬆曲輕柔造型乳液



For softly shaped and defined waves.  
可用於創造微捲和立體的波浪

Gives touchable hold all day long.  
為造型提供一整天可重塑的支撐

Protects from frizz and adds  
beautiful shine.  
對抗毛躁和增添光澤



# STYLESIGN

## CREATIVE TEXTURE 創意質感系列

Excellent for any style - from shiny sleek to rough and disheveled looks.  
適用於創造任何造型－從光滑順服以至富凌亂感的狂野造型。

### ROUGHMAN Matte Cream Paste 質感啞光髮泥



For sculpting matte styles.  
適用於塑造啞光造型

Gives total control and instant hold.  
可全效控制髮絲，和即時定型



### SUPEREGO Structure Styling Cream 質感光澤乳霜



For accentuated, structured looks.  
突顯質感造型

Gives intense shine and strong hold.  
可締造閃亮光彩和強效定型



### MELLOGOO Modelling Paste 質感隨變髮泥



For sculpting unstructured, natural looks  
that can be restyled any time.  
在塑造自然凌亂造型時，可隨時重新塑型



### MATTE REBEL Matte Clay 極致清爽質感啞光髮泥



Creates a rough, extremely matte  
texture and a super dry finish.  
用於創造質感、極致啞光及粗糙感的造型效果



### CRYSTAL TURN High-Shine Gel Wax 質感閃亮啫喱髮蠟



Bundles hair.  
塑造束感造型

Provides a flexible finish with beautiful luster.  
提供彈性定型效果和耀眼光彩



### UNLIMITOR Strong Spray Wax 質感造型噴蠟



For casually textured styles with definition.  
可用於塑造率性質感線條

Versatile as a wax, simple as a spray.  
如髮蠟般多效而使用簡易的噴霧



### SHOWCASER Strong Mousse Wax 質感泡沫髮蠟



For a textured look with radiant shine.  
為質感造型帶來閃亮光彩

Light as foam, strong as wax.  
輕柔如泡沫，強韌如髮蠟



### HARDLINER Powerful Acrylic Gel 質感特強定型髮膠



For shaping indestructible styles with  
ultra-strong hold.  
為塑造如亞加力般堅硬的造型，提供特強  
定型效果



### TEXTURIZER Texturizing Mineral Spray 質感礦物定型噴霧

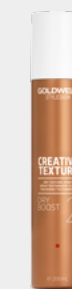


For tousled styles and disheveled looks with  
matte effect.  
可用於創造散亂蓬鬆的啞光造型

Creates casually bundled waves and  
adds body.  
創造率性束感波浪紋，並增加豐盈感



### DRY BOOST Dry Texture Spray 輕盈質感噴霧



For tousled movement and definition.  
為造型帶來率性動感和立體感

Adds light texture, soft grip and  
refreshes volume.  
加添輕柔的質感、抓握感和清新的豐盈感

Perfect as a 2nd day styler or to create  
beautifully airy styles.  
造型後翌日仍能塑造富空氣感的造型





# STYLESIGN

## PERFECT HOLD 完美定型系列

A well-rounded selection of hair sprays to create any long-lasting style with yet flexible hold.  
創造長效造型而富彈性的定型噴霧。



### **BIG FINISH** **Volumizing Hair Spray** 完美定型噴霧

Gives strong, yet flexible hold.  
提供強效而富彈性的定型

Enhances fullness.  
有效提升豐盈感

Protects against humidity.  
具抗潮濕保護



### **SPRAYER** **Powerful Hair Lacquer** 特強定型噴霧

For bold looks with extreme hold.  
為前衛大膽的造型提供特強定型

Locks hair into place.  
使造型不易變形

Protects against humidity.  
具抗潮濕保護



# ELIXIR

## 鍊金油

## VERSATILE TREATMENT OIL 極致天然的多功能護理油

Care for the hair with the power of an elixir. Discover the exceptional effect of Goldwell Elixir to transform every hair type into luxuriously cared-for hair.  
以鍊金油細緻呵護每根髮絲，體驗Goldwell鍊金油為各類髮質帶來尊貴非凡的修護效果。



### **TREATMENT OIL** 護髮油

Absorbed instantly, leaves the hair feeling pleasantly light.  
能瞬速被吸收，讓髮絲保持輕盈

With regenerating Argan Oil and protective and nurturing Tamanu Oil for smooth, soft and tamed hair with exceptional shine.  
蘊含具重建髮絲功效的摩洛哥堅果油和能滋養髮絲的瓊崖海棠油，讓髮絲變得柔滑順服，亮澤耀眼

Can be used as care in towel-dry hair or finish in dry hair.  
可用於毛巾拭乾的頭髮上，或用於乾髮上







“CHANGE  
THE TEXTURE  
AND KEEP  
THE BEAUTY.”

「改變形狀，  
美麗仍然。」

---

*Agnes Westerman*

GOLDWELL  
INTERNATIONAL ARTIST,  
NETHERLANDS

---





# TEXTURE LINES

## 塑形系列

Show the beauty of hair in every imaginable shape. With our Goldwell texture portfolio you can reinvent structure. It's all about semi to permanent transformation of shape and texture. Goldwell texture lines offer a great versatility from intense curls to natural waves, up to sleek, straight hair. Enjoy working with reliable and gentle formulas.

以各種可想像的形態展現秀髮美麗！  
Goldwell塑形系列讓你重新定義燙髮服務，  
隨心所欲地改變形態和塑形。  
系列中有多種不同種類的產品，  
包括能締造自然的波浪曲髮和柔順亮澤的直髮等，  
配方既可靠又溫和。

### NUWAVE

#### 微捲塑形

Goldwell introduces an incredible innovation in texture and shape change: NuWave. The first semi-permanent shape change service for effortless waves and smart process control. Goldwell為超越塑形服務界限，革新市場曲髮服務 — NUWAVE微捲塑形服務，這是首個應用智能操作程序的半永久微捲塑形服務，可創造出容易打理的自然微捲效果。

### STRUCTURE + SHINE

#### 熱力塑形

Structure + Shine is Goldwell's premium solution for shiny, long lasting waves or permanently straightened hair. The assortment offers all you need in order to create beautiful modern looks while also providing excellent conditioning benefits. Goldwell熱力塑形是熱燙的優質之選，旗下的產品能塑造出美麗時尚的形象，同時具有出色的修護功效，讓髮絲在電燙後仍保持亮澤。

### EVOLUTION

#### 依芙冷燙

Evolution is Goldwell's premium perm range for any type of wavy to curly looks. Leaving the hair well-cared, it is especially suitable for color maintenance. Goldwell Evolution依芙冷燙產品，能締造出波浪以至鬚曲等各種曲髮效果。能同步修護每一根髮絲，特別適合染髮後使用，以保持髮色持久。

84 NUWAVE | 86 STRUCTURE + SHINE | 88 EVOLUTION  
89 TOPFORM | 90 VITENSITY | 91 SYSTEM



# NUWAVE

WAVES, YOUR WAY!

你的專屬微捲曲髮！

Effortless waves with a new generation of shape change technology for up to 3 months without regrowth. With SMART CONTROL BOND SYSTEM.

透過新一代的改變形狀技術－「髮芯鏈鎖智能控制系統」－  
塑造容易打理的自然微捲，效果長達3個月。



## NUWAVE 1 - PREP CREAM NUWAVE 1 塑形前軟化霜

Starts the shape change process by gently softening only a minimum amount of bonds. 開始改變頭髮形狀前，以溫和配方軟化部分鏈鎖



Up to 70% less plastic<sup>1</sup>  
減少使用塑膠達70%<sup>1</sup>



## NUWAVE 2 - SHAPING LOTION NUWAVE 2 塑形調整劑

Activates the softened bonds and promotes a controlled shift into the desired shape. 激活已軟化的鏈鎖，進行以智能操控的塑形過程，確保達至理想捲度形狀



## NUWAVE 3 - REPLENISHING SERUM NUWAVE 3 塑形修護精華

Rebuilds the integrity of the hair by infusing it with Keratin, Amino-Acids and Panthenol. 透過加入角蛋白、氨基酸及維生素B5重建髮絲



## NUWAVE 4 - LOCK-IN FLUID NUWAVE 4 塑形鎖緊精華

Finishes the shape change process by locking the bonds and sealing the new waves for up to 3 months. 收緊剛完成微捲塑形的髮絲鏈鎖，以完成改變形狀的程序，效果可長達3個月

<sup>1</sup>Versus market standard bottles.  
與市場上的標準瓶裝比較



# STRUCTURE + SHINE

## 熱力塑形

PERFECT SOLUTION FOR SHINY, LONG-LASTING WAVES OR  
PERMANENTLY STRAIGHTENED HAIR  
塑造長效持久理想曲髮或順滑直髮的完美方案

The sophisticated formula of straightening and care ingredients harmonizes the inner structure of the hair. The hair is conditioned and nourished while being reshaped. 尖端的塑形配方和修護成分能調和頭髮的內部結構，在熱塑過程中，能修護和滋養髮絲。



Up to 70% less plastic!  
減少使用塑膠達70%<sup>1</sup>



### STRUCTURE + SHINE SOFTENING CREAM - AGENT 1 熱力塑形第1劑 - 軟化乳霜

Must be used in combination with Structure + Shine Agent 2 products for neutralizing.  
必須配合熱力塑形第2劑一同使用以達至塑形效果

#### Available in 4 strengths 設有4款強度：

0 - strong: for virgin or resistant hair  
0號 / 特強：適用於原生髮或抗拒性髮質

1 - regular: for normal to fine natural hair  
1號 / 正常：適用於一般至幼細髮質

2 - medium: for color-treated hair or highlights up to 30%  
2號 / 中性：適用於一般受損、染後或挑染30%以下髮質

3 - soft: for sensitized color or highlifted hair  
3號 / 溫和：適用於脆弱、多次染髮或挑染髮質

### STRUCTURE + SHINE NEUTRALIZING CREAM - AGENT 2 熱力塑形第2劑 - 熱力塑形霜

Suitable for all hair types.  
適合所有髮質

Must be used in combination with Structure + Shine Softening Creams.  
必須配合熱力塑形第1劑一同使用

### STRUCTURE + SHINE NEUTRALIZING LOTION - AGENT 2 熱力塑形第2劑 - 熱力塑形液

Suitable for all hair types.  
適合所有髮質

Must be used in combination with Structure + Shine Softening Creams.  
必須配合熱力塑形第1劑一同使用





# EVOLUTION

## HIGH-PERFORMANCE NEUTRAL WAVE 高效能中性波浪效果

Goldwell Evolution for natural looking, beautiful curls full of bounce and elasticity.  
Goldwell Evolution塑造自然、美麗而富彈性的捲曲效果。



### EVOLUTION TYPE 0 依美燙髮套裝0號

For non-chemically treated, resistant hair.  
適用於未經化學處理的抗拒性健康髮質



### EVOLUTION TYPE 1 依美燙髮套裝1號

For chemically treated or fine hair (e.g. permanent, semi-permanent or demi-permanent color).  
適用於經化學處理的幼細髮質(如：曾接受永久性或半永久性的染髮服務)



### EVOLUTION TYPE 2 依美燙髮套裝2號

For chemically treated, porous hair (e.g. high lifted, bleached or heat damaged hair).  
適用於經化學處理的多孔性髮質(如：染淺、去色或因熱力受損髮質)

# TOPFORM

## ACCLAIMED QUALITY FOR IMPROVED RESULTS 廣受好評的品質與效能

The Perm Penetration System (PPS) intensifies the movement at the roots and regulates the curl intensity in the ends - for improved bounce and a more even curl result.  
冷燙滲透系統增強髮根膨脹度及調節髮尾的捲曲效果，改善彈性和達至均勻的捲曲度。



### TOPFORM WAVE LOTION 綠葉燙髮藥水

For strong bounce and intensive, even curl result.  
增加彈性和使捲曲效果更均勻和密集

#### Available in 3 strengths 設有3款強度

**0:** For difficult to perm natural hair.  
(0號)適用於難以電燙的健康髮質

**1:** For normal to fine natural hair.  
(1號)適用於一般及幼細的健康髮質

**2:** For porous, colored hair.  
(2號)適用於多孔性的染後受損髮質



### TOPFORM NEUTRALIZER 綠葉中和劑

Perfectly complements the perm lotions.  
與綠葉燙髮藥水相互配合

Suitable for all 3 strengths.  
適用於3種不同強度的燙髮藥水

Also for neutralizing Foam Wave.  
同時中和燙髮藥水



### TOPFORM BIOCURL 綠葉燙髮套裝

Alkaline cold perm for strong bounce and intensive, even wave results  
鹼性冷燙塑造彈性、緊密、均勻捲曲效果



### TOPFORM ASIA 綠葉亞洲專屬配方套裝

Especially designed for Asia - the perfect brand for durable bouncy curls  
專為亞洲人髮質研發，塑造持久彈性鬆曲效果的完美方案

Achieves great results on every hair type  
在不同髮質呈現出色的捲曲效果

With three different products intensifies that are precisely adjusted to Asian hair structure  
因應亞洲人髮質結構而精確調製出3種不同強度的產品



# VITENSITY

## MILD ALKALINE WAVE 溫和鹼性冷燙

For bouncing, long-lasting and even curl result from roots to ends – adjusted to different hair structures. Notably improved suppleness.

為不同髮質、從髮根至髮尾塑造持久富彈性的均勻捲曲效果，秀髮明顯變得柔順富光澤。



**Available in 3 strengths:**  
設有3款強度：

**Vitensity Type 0:** For difficult to perm, natural hair.  
凡絲蒂(0號)適用於難以電燙的健康髮質

**Vitensity Type 1:** For normal to fine hair.  
凡絲蒂(1號)適用於一般至幼細髮質

**Vitensity Type 2:** Excellent for porous, colored hair. Also suitable for natural hair with up to 50% highlights.  
凡絲蒂(2號)適用於多孔性的染後髮質；同時適用於不多於50%挑染的健康髮質

### VITENSITY PERM LOTION 凡絲蒂燙髮藥水

Carrier System helps to reach difficult-to-access areas of the hair.  
滲透傳輸系統能觸及難以接觸的頭髮部份

Sulphur bonds are opened evenly.  
平均地打開硫鍵鎖

Carrier System and Q10 ensure gentle penetration of the perm lotion.  
滲透傳輸系統及Q10成分幫助燙髮藥水溫和全面地滲透髮絲

# SYSTEM 燙髮輔助系統

## SUPPORTING PRODUCTS 輔助工具

Additional protection and care for shape change services.

為頭髮於塑形服務時提供額外保護和修護。



### SYSTEM PROTECTOR Balancing Cream 輔助系統 — 塑形保護霜

Additional protection and care for (highly) damaged and/or bleached hair during Goldwell NuWave and Structure + Shine Services.  
為(嚴重)受損及/或染淺髮質於Goldwell NuWave微捲塑形服務及Structure + Shine熱力塑形服務時，提供額外保護和修護。



### SYSTEM HYDRATOR Hydrating Treatment 輔助系統 — 水潤護理霜

Additional lightweight care during Goldwell shape change services. Smoothens the hair's surface for better combability and provides hydration for supple and healthy looking hair.

額外的輕盈護理，順滑髮絲表層，使頭髮更易梳理，為頭髮補濕、增添柔韌感，頭髮感覺更健康。

To be used after the service.  
於服務後使用。



# GET READY FOR YOUR DIGITAL PRODUCT INSPIRATION ANYTIME, ANYWHERE...

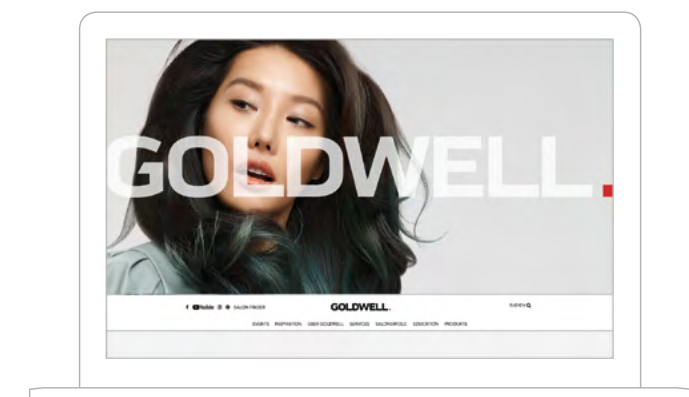
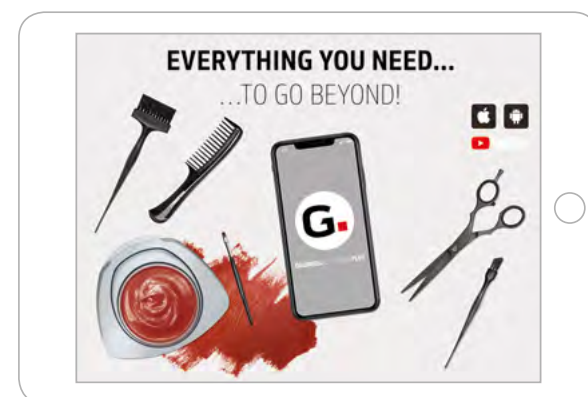
## 利用網絡平台隨時隨地得到美髮知識

Get new impulses with our digital education - developed to perfectly enrich your skills and hands-on experience.

Now you can have access to new inspiration wherever you are and easily keep your knowledge up-to-date.

Dive into the whole Goldwell world with our new digital opportunities.

通過我們的網絡教育平台獲得衝擊動力－豐富你的技能和手藝。現在無論你身在何處，都可以獲得新的靈感，並輕鬆掌握最新知識。瀏覽我們的網絡教育平台，深入了解整個Goldwell世界。



### **GOLDWELL EDUCATION PLUS APP** 手機應用程式

DISCOVER THE WORLD  
OF GOLDWELL EDUCATION  
WITH USEFUL AND FUN-TO-USE TOOLS  
THAT PROVIDE EVERYTHING YOU NEED  
IN THE PALM OF YOUR HANDS.  
利用實用和有趣的工具探索GOLDWELL的教育世界，  
你所需的一切，盡在你掌心之中

### **GOLDWELL EDUCATION PLUS YOUTUBE CHANNEL** YOUTUBE教學頻道

FOR INSPIRATIONAL VIDEOS  
AND PRO-TUTORIALS.  
探索具啟發性的影片及專業導修教學

**WWW.GOLDWELLEDCATION.PLUS**

### **GOLDWELL ONLINE** 網站

EVENTS  
活動

HAIR / COLOR / STYLE  
年度形象系列

ABOUT GOLDWELL  
關於GOLDWELL

SERVICES  
美髮服務

SALON SUCCESS  
髮廊成功要訣

EDUCATION  
教育

PRODUCTS  
產品



# #GOGOLDWELL



Explore the full portfolio and discover endless possibilities. | [goldwell.com](http://goldwell.com)



Goldwell is part of Kao Salon Division.

**Kao**  
SALON DIVISION

Making life beautiful for salons, stylists and their clients.